

LEA Name : Union SD
Address : 354 Baker Street, Ste 2
Rimersburg , PA 16248

County : Clarion
AUN Number : 106169003
LEA Type : SD

Annual Financial Report Accuracy Certification Statement

For Fiscal Year Ending
6/30/2021

Pennsylvania Department of Education

&

Office of Comptroller Operations

PDE-2056: Intermediate Unit

PDE-2057: School District, AVTS/CTC, Charter School,
and Special Program Jointure

CERTIFICATION: By signing this page I agree that the electronic data submitted is a complete and accurate statement of the financial operations and status of the local education agency for the fiscal year. It has been prepared in accordance with generally accepted accounting principles and established Commonwealth of PA reporting guidelines.



Chief School Administrator Signature

12-16-2021

Date



Board Secretary Signature

12/16/21

Date

Megan Hepler

Contact Person

heplerml@unionsd.net

Contact Person E-mail Address

(814)473-6311

Ext :9

Contact Person Telephone Number

(814)473-8201

Contact Person Fax Number

Audit Certification
Annual Financial Report:
For Fiscal Year Ending **6/30/2021**
(Pursuant to PA School Code Section 218(b))

LEA Name : Union SD
AUN Number : 106169003
County : Clarion

Audit Certification Due: 12/31/2021

This certification is applicable to the Annual Financial Report data submitted through the Consolidated Financial Reporting System (CFRS).

CERTIFICATION: By signing this page I agree that the financial statements of the school have been properly audited as noted above pursuant to Article XXIV, and in the auditor's professional opinion, the Annual Financial Report (PDE-2057) submitted through CFRS is materially consistent with the audited financial statements.

Chief School Administrator



Signature

12-6-2021
Date

Board Secretary



Signature

12-6-2021
Date

Megan Hepler

Contact Person

heplerml@unionsd.net

Contact Person E-mail Address

(814)473-6311 Ext :9

Contact Person Telephone Number

(814)473-8201

Contact Person Fax Number

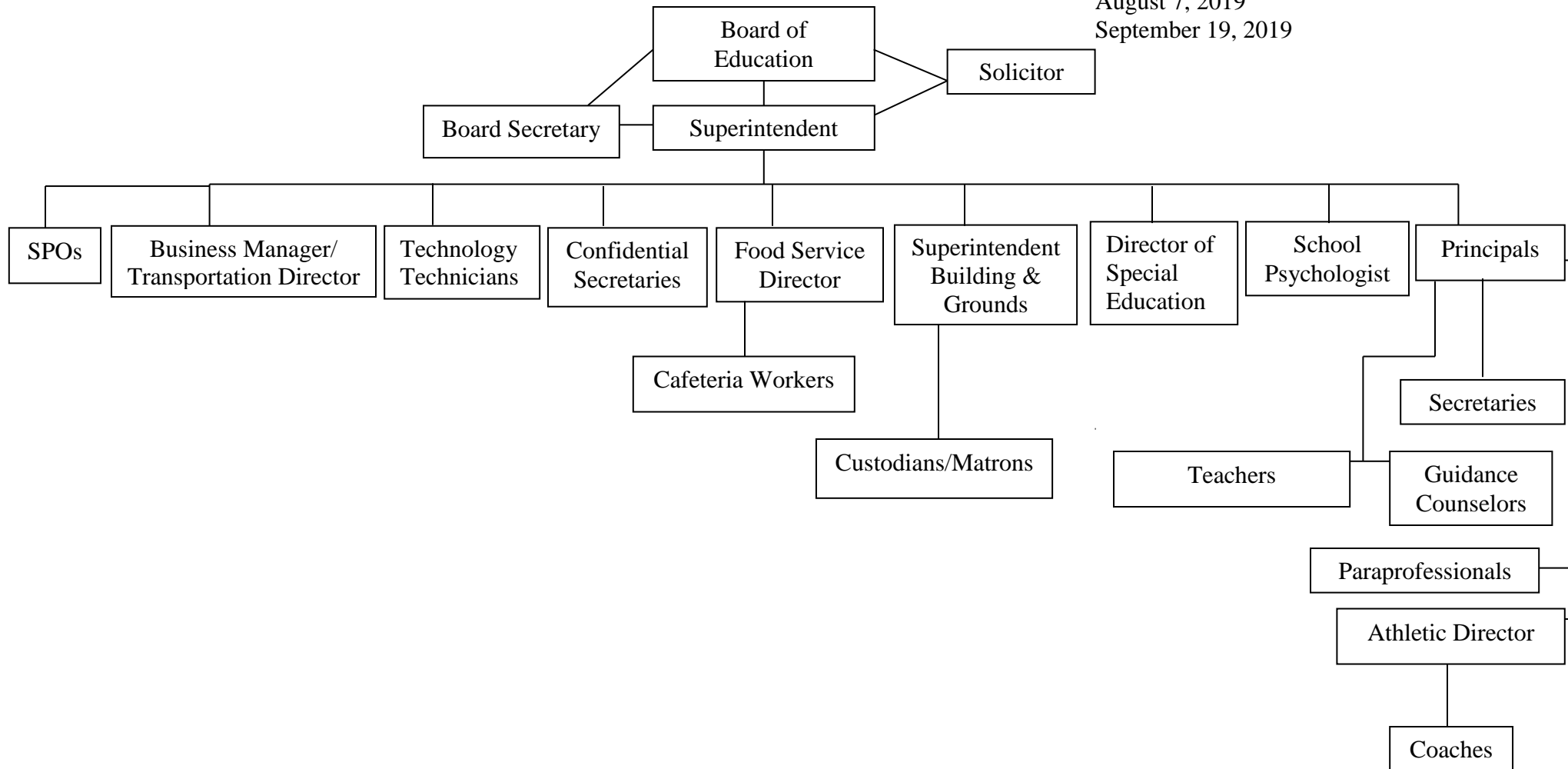
UNION SCHOOL DISTRICT

SECTION: LOCAL BOARD PROCEDURES

TITLE: ORGANIZATION CHART

ADOPTED: September 16, 1999

REVISED: May 3, 2018
August 7, 2019
September 19, 2019





Book	Policy Manual
Section	600 Finances
Title	GASB Statement 34
Code	622
Status	Active
Adopted	September 19, 2002

Purpose

The Board recognizes the need to implement the required accounting and financial reporting standards stipulated by the Pennsylvania Department of Education.[\[1\]](#)

The primary objectives of implementing the GASB Statement 34 are to assure compliance with state requirements, and properly account for both the financial and economic resources of the district.

Authority

Participation of the school district in any such activity shall be in accordance with Board policy.[\[2\]](#)

Delegation of Responsibility

The responsibility to coordinate the compilation and preparation of all information necessary to implement this policy is delegated to the Business Manager.

The designated individual shall be responsible for implementing the necessary procedures to establish and maintain a fixed asset inventory, including depreciation schedules. Depreciation shall be computed on a straight-line basis over the useful lives of the assets, using an averaging convention. Normal maintenance and repairs shall be charged to expense as incurred; major renewals and betterments that materially extend the life or increase the value of the asset shall be capitalized. A schedule of accumulated depreciation shall be consistent from year to year. The basis for depreciation, including groups of assets and useful lives, shall be in writing and submitted for review to the Board.

The Business Manager shall prepare the required Management Discussion and Analysis (MD&A). The MD&A shall be in the form required by GASB Statement 34 and shall be submitted to the Board for approval, prior to publication.

Prior to submission of the MD&A for Board approval, the district's independent auditors shall review the MD&A, in accordance with SAS No. 52, "Required Supplementary Information".

Guidelines

In order to associate debt with acquired assets and to avoid net asset deficits, any asset that has been acquired with debt proceeds shall be capitalized, regardless of the cost of the asset. The asset life of these assets shall be considered relative to the time of the respective debt amortizations.

For all other assets not acquired by debt proceeds, the dollar value of any single item for inclusion in the fixed assets accounts shall be not less than \$4,000.

The capitalization threshold shall be set at a level that will capture at least 80% of all fixed assets.

The assets listed below do not normally individually meet capitalization threshold criteria:

1. Library books.
2. Classroom texts.
3. Computer equipment.
4. Classroom furniture.

These asset category costs shall be capitalized and depreciated as groups when that group's acquisition cost exceeds the capitalization threshold in any given fiscal year.

For group asset depreciation purposes, the estimated useful life of the group may be based on the weighted average or simple average of the useful life of individual items, or on an assessment of the life of the group as a whole. Periodically, the district shall review the estimated life of groups of assets and adjust the remaining depreciation life of the group.

Assets that fall below the capitalization threshold for GASB 34 reporting purposes may still be significant for insurance, warranty service, and obsolescence/ replacement policy tracking purposes. The district may record and maintain these non-GASB 34 asset inventories in subsidiary ledgers.

Legal

[1. 24 P.S. 613](#)

[2. 24 P.S. 218](#)

<u>Val Number</u>	<u>Description</u>	<u>Justification</u>
30685	Revenue Detail: Current Tax Revenue amount cannot exceed 50% variance from prior year amount. Correct the data or enter a justification. 6153, Current AFR Rev Detail: \$41,308.70 6153, Prior AFR Rev Detail: \$26,905.12	Attributed to the overall increase in real estate sales in 2020-2021 over 2019-2020.
50160	SOIN: All Governmental Fund General Obligation Bonds must include an amount for Interest Paid during Fiscal Year. Correct data or enter a justification.	No interest or principals paid in the fiscal year for the newly issued bonds.
50410	SESS - 2140 Psychological Services: SESS Schedule amounts for Special Education vary from prior year by 40% or more. Correct the data or enter a justification. SESS Schedule 2140: \$61,448.55 Prior Year SESS Schedule 2140: \$124,648.63	Eliminated psychologist position and use contracted services for psychological services. Saved on salaries and benefits.
50440	SESS - 2260 Instruction and Curriculum Development Services: SESS Schedule amounts for Special Education vary from prior year by 40% or more. Correct the data or enter a justification. SESS Schedule 2260: \$103,679.06 Prior Year SESS Schedule 2260: \$0.00	Created new position and hired Director of Special Education.

Amounts Expressed in Whole Dollars

	<u>General Fund</u> <u>(10)</u>	<u>Student Sponsored</u> <u>Activity Fund</u> <u>(21)</u>	<u>Public Purpose Trust</u> <u>(27)</u>	<u>Other Compt Approved</u> <u>(28)</u>	<u>Athletic / Activity</u> <u>(29)</u>
Assets And Deferred Outflows Of Resources					
Assets					
0100 Cash and Cash Equivalents	528,718				
0110 Investments	7,437,996				
0120 Taxes Receivable	171,805				
0130 Due From Other Funds					
0141 Due From Other Governments	163,649				
0142 State Revenue Receivable					
0143 Federal Revenue Receivable					
0145 Other Intergovernmental Revenue Receivable					
0146 Due from Primary Government					
0147 Due from Component Unit					
0150 Other Receivables					
0170 Inventories	32,000				
0180 Prepaid Expenses (Expenditures)					
0190 Other Current Assets					
Total Assets	\$8,334,168				
0910 Deferred Outflows of Resources					
Total Assets And Deferred Outflows Of Resources	\$8,334,168				

Amounts Expressed in Whole Dollars

<u>Capital Reserve (690.</u>	<u>Capital Reserve (1431)</u>	<u>Other Capital Projects</u>	<u>Debt Service</u>	<u>Permanent</u>
<u>1850)</u>	<u>(32)</u>	<u>Fund</u>	<u>(40)</u>	<u>(90)</u>
<u>(31)</u>		<u>(39)</u>		

Assets And Deferred Outflows Of Resources

Assets

0100 Cash and Cash Equivalents	193,125
0110 Investments	
0120 Taxes Receivable	
0130 Due From Other Funds	
0141 Due From Other Governments	
0142 State Revenue Receivable	
0143 Federal Revenue Receivable	
0145 Other Intergovernmental Revenue Receivable	
0146 Due from Primary Government	
0147 Due from Component Unit	
0150 Other Receivables	
0170 Inventories	
0180 Prepaid Expenses (Expenditures)	
0190 Other Current Assets	

Total Assets	\$193,125
---------------------	------------------

0910 Deferred Outflows of Resources

Total Assets And Deferred Outflows Of Resources	\$193,125
--	------------------

Amounts Expressed in Whole Dollars

Total Governmental Funds

Assets And Deferred Outflows Of Resources

Assets	
0100 Cash and Cash Equivalents	721,843
0110 Investments	7,437,996
0120 Taxes Receivable	171,805
0130 Due From Other Funds	
0141 Due From Other Governments	163,649
0142 State Revenue Receivable	
0143 Federal Revenue Receivable	
0145 Other Intergovernmental Revenue Receivable	
0146 Due from Primary Government	
0147 Due from Component Unit	
0150 Other Receivables	
0170 Inventories	32,000
0180 Prepaid Expenses (Expenditures)	
0190 Other Current Assets	
Total Assets	\$8,527,293
0910 Deferred Outflows of Resources	
Total Assets And Deferred Outflows Of Resources	\$8,527,293

Amounts Expressed in Whole Dollars

<u>General Fund</u> <u>(10)</u>	<u>Student Sponsored</u> <u>Activity Fund</u> <u>(21)</u>	<u>Public Purpose Trust</u> <u>(27)</u>	<u>Other Compt Approved</u> <u>(28)</u>	<u>Athletic / Activity</u> <u>(29)</u>
------------------------------------	---	--	--	---

Liabilities And Deferred Inflows Of Resources And Fund Balances

Liabilities

0400 Due to Other Funds	
0411 Due to Other Governments	
0412 Due to Primary Government	
0413 Due to Component Unit	
0420 Accounts Payable	51,273
0430 Contracts Payable	
0440 Current Portion of Long-Term Debt	
0450 Short-Term Payables	
0461 Accrued Salaries and Benefits	
0462 Payroll Deductions and Withholding	
0480 Unearned Revenues	
0490 Other Current Liabilities	1,355,883

Total Liabilities **\$1,407,156**

0950 Deferred Inflows of Resources	171,805
------------------------------------	---------

Fund Balances

0810 Nonspendable Fund Balance	32,000
0820 Restricted Fund Balance	
0830 Committed Fund Balance	3,716,993
0840 Assigned Fund Balance	
0850 Unassigned Fund Balance	3,006,214

Total Fund Balances **\$6,755,207**

Total Liabilities, Deferred Inflows Of Resources And Fund Balances **\$8,334,168**

Amounts Expressed in Whole Dollars

<u>Capital Reserve (690.</u>	<u>Capital Reserve (1431)</u>	<u>Other Capital Projects</u>	<u>Debt Service</u>	<u>Permanent</u>
<u>1850)</u>	<u>(32)</u>	<u>Fund</u>	<u>(40)</u>	<u>(90)</u>
<u>(31)</u>		<u>(39)</u>		

Liabilities And Deferred Inflows Of Resources And Fund Balances

- Liabilities**
- 0400 Due to Other Funds
 - 0411 Due to Other Governments
 - 0412 Due to Primary Government
 - 0413 Due to Component Unit
 - 0420 Accounts Payable
 - 0430 Contracts Payable
 - 0440 Current Portion of Long-Term Debt
 - 0450 Short-Term Payables
 - 0461 Accrued Salaries and Benefits
 - 0462 Payroll Deductions and Withholding
 - 0480 Unearned Revenues
 - 0490 Other Current Liabilities

Total Liabilities

- 0950 Deferred Inflows of Resources

Fund Balances

- 0810 Nonspendable Fund Balance
- 0820 Restricted Fund Balance
- 0830 Committed Fund Balance
- 0840 Assigned Fund Balance 193,125
- 0850 Unassigned Fund Balance

Total Fund Balances \$193,125

Total Liabilities, Deferred Inflows Of Resources And Fund Balances \$193,125

Amounts Expressed in Whole Dollars

Total Governmental Funds

Liabilities And Deferred Inflows Of Resources And Fund Balances

Liabilities

0400 Due to Other Funds	
0411 Due to Other Governments	
0412 Due to Primary Government	
0413 Due to Component Unit	
0420 Accounts Payable	51,273
0430 Contracts Payable	
0440 Current Portion of Long-Term Debt	
0450 Short-Term Payables	
0461 Accrued Salaries and Benefits	
0462 Payroll Deductions and Withholding	
0480 Unearned Revenues	
0490 Other Current Liabilities	1,355,883

Total Liabilities \$1,407,156

0950 Deferred Inflows of Resources	171,805
------------------------------------	---------

Fund Balances

0810 Nonspendable Fund Balance	32,000
0820 Restricted Fund Balance	
0830 Committed Fund Balance	3,716,993
0840 Assigned Fund Balance	193,125
0850 Unassigned Fund Balance	3,006,214

Total Fund Balances \$6,948,332

Total Liabilities, Deferred Inflows Of Resources And Fund Balances \$8,527,293

Amounts Expressed in Whole Dollars	<u>General Fund</u> <u>(10)</u>	<u>Student Sponsored</u> <u>Activity Fund</u> <u>(21)</u>	<u>Public Purpose Trust</u> <u>(27)</u>	<u>Other Compt Approved</u> <u>(28)</u>	<u>Athletic / Activity</u> <u>(29)</u>
Revenues					
6000 Revenue from Local Sources	2,548,029				
7000 Revenue from State Sources	8,698,721				
8000 Revenue from Federal Sources	625,738				
Total Revenues	\$11,872,488				
Expenditures					
1000 Instruction	7,088,703				
2000 Support Services	4,140,051				
3000 Operation of Non-Instructional Services	260,505				
4000 Facilities Acquisition, Construction and Improvement Services					
5110 Debt Service					
5130 Refund of Prior Year Revenues / Receipts	752				
Total Expenditures	\$11,490,011				
Excess (Deficiency) Of Revenues Over Expenditures	\$382,477				
Other Financing Sources (Uses)					
9110 Face Value of Bonds Issued					
9120 Proceeds from Refunding of Bonds	1,299,508				
9130 Bond Premiums					
9200 Proceeds from Extended-Term Financing					
9300 Interfund Transfers - IN					
9400 Sale of or Compensation for Loss of Fixed Assets	(34,024)				
9710 Transfers from Component Units					
9720 Transfers from Primary Governments					
9910 Other Financing Sources Not Listed in the 9000 Series					
9990 Insurance Recoveries					
5120 Debt Service – Refunded Bonds	1,642,328				
5150 Bond Discounts					
5200 Interfund Transfers – Out	150,741				
5300 Transfers Out to Component Units/Primary Governments					
Total Other Financing Sources (Uses)	(\$527,585)				

Amounts Expressed in Whole Dollars	<u>Capital Reserve (690. 1850 (31)</u>	<u>Capital Reserve (1431) (32)</u>	<u>Other Capital Projects Fund (39)</u>	<u>Debt Service (40)</u>	<u>Permanent (90)</u>
Revenues					
6000 Revenue from Local Sources			30		
7000 Revenue from State Sources					
8000 Revenue from Federal Sources					
Total Revenues			\$30		
Expenditures					
1000 Instruction					
2000 Support Services			15		
3000 Operation of Non-Instructional Services					
4000 Facilities Acquisition, Construction and Improvement Services			1,105,300		
5110 Debt Service					
5130 Refund of Prior Year Revenues / Receipts					
Total Expenditures			\$1,105,315		
Excess (Deficiency) Of Revenues Over Expenditures			(\$1,105,285)		
Other Financing Sources (Uses)					
9110 Face Value of Bonds Issued			1,245,672		
9120 Proceeds from Refunding of Bonds					
9130 Bond Premiums					
9200 Proceeds from Extended-Term Financing					
9300 Interfund Transfers - IN					
9400 Sale of or Compensation for Loss of Fixed Assets					
9710 Transfers from Component Units					
9720 Transfers from Primary Governments					
9910 Other Financing Sources Not Listed in the 9000 Series					
9990 Insurance Recoveries					
5120 Debt Service – Refunded Bonds					
5150 Bond Discounts					
5200 Interfund Transfers – Out					
5300 Transfers Out to Component Units/Primary Governments					
Total Other Financing Sources (Uses)			\$1,245,672		

Amounts Expressed in Whole Dollars	<u>Total Governmental Funds</u>
Revenues	
6000 Revenue from Local Sources	2,548,059
7000 Revenue from State Sources	8,698,721
8000 Revenue from Federal Sources	625,738
Total Revenues	\$11,872,518
Expenditures	
1000 Instruction	7,088,703
2000 Support Services	4,140,066
3000 Operation of Non-Instructional Services	260,505
4000 Facilities Acquisition, Construction and Improvement Services	1,105,300
5110 Debt Service	
5130 Refund of Prior Year Revenues / Receipts	752
Total Expenditures	\$12,595,326
Excess (Deficiency) Of Revenues Over Expenditures	(\$722,808)
Other Financing Sources (Uses)	
9110 Face Value of Bonds Issued	1,245,672
9120 Proceeds from Refunding of Bonds	1,299,508
9130 Bond Premiums	
9200 Proceeds from Extended-Term Financing	
9300 Interfund Transfers - IN	
9400 Sale of or Compensation for Loss of Fixed Assets	(34,024)
9710 Transfers from Component Units	
9720 Transfers from Primary Governments	
9910 Other Financing Sources Not Listed in the 9000 Series	
9990 Insurance Recoveries	
5120 Debt Service – Refunded Bonds	1,642,328
5150 Bond Discounts	
5200 Interfund Transfers – Out	150,741
5300 Transfers Out to Component Units/Primary Governments	
Total Other Financing Sources (Uses)	\$718,087

Amounts Expressed in Whole Dollars	<u>General Fund</u> <u>(10)</u>	<u>Student Sponsored</u> <u>Activity Fund</u> <u>(21)</u>	<u>Public Purpose Trust</u> <u>(27)</u>	<u>Other Compt Approved</u> <u>(28)</u>	<u>Athletic / Activity</u> <u>(29)</u>
Special And Extraordinary Items					
9920 Special Items – Gains					
9930 Extraordinary Items – Gains					
5520 Special Items – Losses					
5530 Extraordinary Items – Losses					
Net Change In Fund Balances	(\$145,108)				
Fund Balance					
0001 Fund Balance - Beginning of Fiscal Year	6,900,315				
Fund Balance - End Of Year	\$6,755,207				

Amounts Expressed in Whole Dollars	<u>Capital Reserve (690.</u> <u>1850)</u> <u>(31)</u>	<u>Capital Reserve (1431)</u> <u>(32)</u>	<u>Other Capital Projects</u> <u>Fund</u> <u>(39)</u>	<u>Debt Service</u> <u>(40)</u>	<u>Permanent</u> <u>(90)</u>
Special And Extraordinary Items					
9920 Special Items – Gains					
9930 Extraordinary Items – Gains					
5520 Special Items – Losses					
5530 Extraordinary Items – Losses					
Net Change In Fund Balances			\$140,387		
Fund Balance					
0001 Fund Balance - Beginning of Fiscal Year			52,738		
Fund Balance - End Of Year			\$193,125		

Amounts Expressed in Whole Dollars	<u>Total Governmental Funds</u>
Special And Extraordinary Items	
9920 Special Items – Gains	
9930 Extraordinary Items – Gains	
5520 Special Items – Losses	
5530 Extraordinary Items – Losses	
Net Change In Fund Balances	(\$4,721)
Fund Balance	
0001 Fund Balance - Beginning of Fiscal Year	6,953,053
Fund Balance - End Of Year	\$6,948,332

Amounts Expressed in Whole Dollars	<u>Food Service</u> <u>(51)</u>	<u>Child Care</u> <u>Operations</u> <u>(52)</u>	<u>Other Enterprise</u> <u>(58)</u>	<u>TOTAL</u>	<u>Internal Service</u> <u>(60)</u>
Assets And Deferred Outflows Of Resources					
Current Assets					
0100 Cash and Cash Equivalents	70,134			70,134	
0110 Investments					
0130 Due From Other Funds					
0141 Due From Other Governments					
0142 State Revenue Receivable					
0143 Federal Revenue Receivable					
0146 Due from Primary Government					
0147 Due from Component Unit					
0150 Other Receivables					
0170 Inventories	12,230			12,230	
0180 Prepaid Expenses (Expenditures)					
0190 Other Current Assets					
Total Current Assets	\$82,364			\$82,364	
Noncurrent Assets					
0211 Land					
0212 Site Improvements (Net)					
0220 Buildings and Building Improvements (Net)					
0230 Machinery, Equipment and Furniture (Net)	24,494			24,494	
0250 Construction in Progress					
0260 Long Term Prepayments					
0290 Other Noncurrent Assets					
Total Noncurrent Assets	\$24,494			\$24,494	
0910 Deferred Outflows of Resources					
Total Assets And Deferred Outflows Of Resources	\$106,858			\$106,858	

Amounts Expressed in Whole Dollars	<u>Food Service</u> <u>(51)</u>	<u>Child Care</u> <u>Operations</u> <u>(52)</u>	<u>Other Enterprise</u> <u>(58)</u>	<u>TOTAL</u>	<u>Internal Service</u> <u>(60)</u>
Liabilities And Deferred Inflows Of Resources And Net Position					
Current Liabilities					
0400 Due to Other Funds					
0411 Due to Other Governments					
0413 Due to Component Unit					
0420 Accounts Payable	78,138			78,138	
0430 Contracts Payable					
0440 Current Portion of Long-Term Debt					
0450 Short-Term Payables					
0461 Accrued Salaries and Benefits					
0462 Payroll Deductions and Withholding					
0480 Unearned Revenues					
0490 Other Current Liabilities					
Total Current Liabilities	\$78,138			\$78,138	
Noncurrent Liabilities					
0510 Bonds Payable					
0520 Extended-Term Financing Agreements Payable					
0530 Lease-Purchase Obligations					
0540 Accumulated Compensated Absences					
0550 Authority Lease Obligations					
0560 Other Post-Employment Benefits (OPEB)					
0570 Net Pension Liability					
0599 Other Noncurrent Liabilities					
Total Noncurrent Liabilities					
Total Liabilities	\$78,138			\$78,138	
0950 Deferred Inflows of Resources					
Net Position					
0791 Net Investment in Capital Assets	24,494			24,494	
0008 Restricted Net Position (0792 – 0798)					
0799 Unrestricted Net Position	4,226			4,226	
Total Net Position	\$28,720			\$28,720	
Total Liabilities And Deferred Inflows Of Resources And Net Position	\$106,858			\$106,858	

Amounts Expressed in Whole Dollars	<u>Food Service</u> <u>(51)</u>	<u>Child Care Operations</u> <u>(52)</u>	<u>Other Enterprise</u> <u>(58)</u>	<u>TOTAL</u>	<u>Internal Service</u> <u>(60)</u>
Operating Revenues					
6600 Food Service Revenue	27,869			27,869	
0071 Charges for Services					
0072 Other Operating Revenue					
Total Operating Revenues	\$27,869			\$27,869	
Operating Expenses					
100 Personnel Services – Salaries	197,658			197,658	
200 Personnel Services – Employee Benefits	119,203			119,203	
300 Purchased Professional and Technical Services					
400 Purchased Property Services	5,124			5,124	
500 Other Purchased Services	607			607	
600 Supplies	141,954			141,954	
740 Depreciation	5,110			5,110	
810 Dues and Fees	558			558	
880 Refunds of Prior Years' Receipts					
890 Miscellaneous Expenditures					
Total Operating Expenses	\$470,214			\$470,214	
Operating Income (Loss)	(\$442,345)			(\$442,345)	
Non Operating Revenues (Expenses)					
6500 Earnings on Investments	36			36	
6920 Contributions and Donations from Private Sources					
6930 Gains or Losses on Sale of Fixed Assets					
6991 Refunds of a Prior Year Expenditure					
7000 Revenue from State Sources	194			194	
8000 Revenue from Federal Sources	332,419			332,419	
9990 Insurance Recoveries					
820 Claims and Judgments Against the LEA					
830 Interest					
TOTAL Non Operating Revenues (Expenses)	\$332,649			\$332,649	
Income (Loss) Before Contributions And Transfers	(\$109,696)			(\$109,696)	

Amounts Expressed in Whole Dollars	<u>Food Service</u> <u>(51)</u>	<u>Child Care Operations</u> <u>(52)</u>	<u>Other Enterprise</u> <u>(58)</u>	<u>TOTAL</u>	<u>Internal Service</u> <u>(60)</u>
Contributions, Transfers, and Special and Extraordinary Items					
5200 Interfund Transfers – Out					
5300 Transfers Out to Component Units/Primary Governments					
5520 Special Items – Losses					
5530 Extraordinary Items – Losses					
9300 Interfund Transfers - IN	150,741			150,741	
9500 Capital Contributions					
9700 Transfers IN From Component Units/Primary Governments					
9920 Special Items – Gains					
9930 Extraordinary Items – Gains					
Change In Net Position	\$41,045			\$41,045	
0002 Net Position - Beginning of Fiscal Year	(12,325)			(12,325)	
0003 Accounting Changes / Residual Equity Transfers					
Net Position - End Of Year	\$28,720			\$28,720	

Amounts Expressed in Whole Dollars	<u>Food Service</u> <u>(51)</u>	<u>Child Care Operations</u> <u>(52)</u>	<u>Other Enterprise</u> <u>(58)</u>	<u>TOTAL</u>	<u>Internal Service(60)</u>
Cash Flows From Operating Activities					
0011 Cash Receipts From Users	27,869			27,869	
0012 Cash Receipts From Assessments Made to Other Funds					
0013 Cash Receipts From Earnings on Investments					
0014 Cash Receipts From Other Operating Revenue					
0015 Cash Payments To Employees For Services	316,861			316,861	
0016 Cash Payments For Insurance Claims					
0017 Cash Payments To Suppliers For Goods and Services	137,341			137,341	
0018 Cash Payments For Other Operating Expenses					
Net Cash Provided By (Used For) Operating Activities	(\$426,333)			(\$426,333)	
Cash Flows From Non-Capital Financing Activities					
0021 Receipts From Local Sources - 6000					
0022 Receipts From State Sources - 7000	194			194	
0023 Receipts From Federal Sources -8000	332,419			332,419	
0024 Notes and Loans Received (Repaid)					
0025 Interest Paid on Notes/Loans - 5100-830					
0026 Operating Transfers In (Out)/Residual Equity Trans					
0027 Operating Transfers In (Out) Primary Government / Comp Unit	150,741			150,741	
0028 Receipts From Refund of Prior Year Expenditures - 6991					
0029 Special and Extraordinary Gains (losses)					
0030 Receipts from Insurance Recoveries -9990					
Net Cash Prov By (Used for) Non-Capital Financing Activities	\$483,354			\$483,354	
Cash Flows From Capital and Related Financing Activities					
0031 Payments For Fac Acq, Const, and Imp - 4000					
0032 Gain / (Loss) on Sale of Fixed Assets - 6930					
0033 Proceeds From Extended Term Financing - 9200					
0034 Principal Paid on Financing Agreements					
0035 Interest Paid on Financing Agreements - 5100-830					
0036 (Inc) Dec in Contributed Capital					
Net Cash Prov By (Used for) Capital and Related Financing Activities					
Cash Flows From Investing Activities					
0041 Earnings on Investments - 6500	36			36	
0042 Purchase of Inv Securities / Deposits to Inv Pools					
0043 Receipts From Investment Pool Withdrawals					
0044 Proceeds from Sale and Maturity of Inv Securities					

LEA : 106169003 Union SD

Printed 12/16/2021 1:34:25 PM

0045 Loans Received (Paid)

Net Cash Prov By (Used for) Investing Activities	\$36	\$36
---	-------------	-------------

	<u>Food Service</u> <u>(51)</u>	<u>Child Care Operations</u> <u>(52)</u>	<u>Other Enterprise</u> <u>(58)</u>	<u>TOTAL</u>	<u>Internal Service</u> <u>(60)</u>
Net Increase (Decrease) in Cash Flows	57,057			57,057	
0004 Cash and Cash Equivalents Beginning of Year	13,076			13,076	
Cash and Cash Equivalents at Year End	\$70,133			\$70,133	

Reconciliation of Operating Income (Loss) To Net Cash Provided by (Used For) Operating Activities

0005 Operating Income (Loss) per REP	(442,345)			(442,345)	
Adjustments					
0051 Depreciation and Net Amortization	5,110			5,110	
0052 Provision for Uncollectible Accounts					
0053 Other Adjustments					
Effect of Changes in Assets, Liabilities, Deferred Outflows and Deferred Inflows					
0054 (Inc) Dec In Accounts Receivable (0120-0150)					
0055 Advances to Other Funds (0160)					
0056 (Inc) Dec in Inventories (0170)	10,902			10,902	
0057 (Inc) Dec in Prepaid Expenses (0180)					
0058 (Inc) Dec in Other Current or Noncurrent Assets					
0064 Deferred Outflows (0910)					
0059 Inc (Dec) in Accounts Payable (0400-0450)					
0060 Inc (Dec) in Accrued Salaries/Benefits (0461)					
0065 Inc (Dec) in Net Pension Liabilities (0570)					
0066 Inc (Dec) in Other Postemp Benefit Oblig (0560)					
0061 Inc (Dec) in Payroll Deductions/Withholding (0462)					
0062 Inc (Dec) in Unearned Revenue (0480)					
0063 Inc (Dec) in Other Current or Noncurrent Liabilities					
0067 Deferred Inflows (0950)					
Total Adjustments	\$16,012			\$16,012	
Cash Provided By (Used for) Total	(\$426,333)			(\$426,333)	

COMBINED STATEMENT OF CASH FLOWS
SCHEDULE OF NONCASH INVESTING, CAPITAL, AND FINANCING ACTIVITIES

Explanation of Transaction and Balance Sheet Effect	Amount
Total	

LEA : 106169003 Union SD

Printed 12/16/2021 1:34:31 PM

Amounts Expressed in Whole Dollars

Private Purpose Trust
(71)

Investment Trust
(72)

Pension Trust
(73)

Student Activity Custodial
(81)

Assets And Deferred Outflows Of Resources

Assets

0100 Cash and Cash Equivalents	88,588
0110 Investments	153,901
0130 Due From Other Funds	
0140 Due from Other Governments, Primary Government and Component Units	
0150 Other Receivables	
0170 Inventories	
0180 Prepaid Expenses (Expenditures)	
0190 Other Current Assets	
0220 Buildings and Building Improvements (Net)	
0230 Machinery, Equipment and Furniture (Net)	

Total Assets **\$242,489**

0910 Deferred Outflows of Resources

Total Assets And Deferred Outflows Of Resources **\$242,489**

LEA : 106169003 Union SD

Printed 12/16/2021 1:34:31 PM

Amounts Expressed in Whole Dollars

Other Custodial Fiduciary Component Units Total Fiduciary Funds
(89) (98)

Assets And Deferred Outflows Of Resources

Assets		
0100 Cash and Cash Equivalents		88,588
0110 Investments		153,901
0130 Due From Other Funds		
0140 Due from Other Governments, Primary Government and Component Units		
0150 Other Receivables		
0170 Inventories		
0180 Prepaid Expenses (Expenditures)		
0190 Other Current Assets		
0220 Buildings and Building Improvements (Net)		
0230 Machinery, Equipment and Furniture (Net)		
Total Assets		\$242,489
0910 Deferred Outflows of Resources		
Total Assets And Deferred Outflows Of Resources		\$242,489

LEA : 106169003 Union SD

Printed 12/16/2021 1:34:31 PM

Amounts Expressed in Whole Dollars

Private Purpose Trust
(71)

Investment Trust
(72)

Pension Trust
(73)

Student Activity Custodial
(81)

Liabilities, Deferred Inflows Of Resources And Net Position

Liabilities

0400 Due to Other Funds	
0410 Due to Other Governments, Primary Government and Component Units	
0420 Accounts Payable	
0430 Contracts Payable	
0450 Short-Term Payables	
0460 Payroll Accruals and Withholdings	
0480 Unearned Revenues	
0490 Other Current Liabilities	67,378

Total Liabilities **\$67,378**

0950 Deferred Inflows of Resources

Net Position

0791 Net Investment in Capital Assets	
0009 Restricted Net Position (0792 – 0798)	175,111
0799 Unrestricted Net Position	

Total Net Position **\$175,111**

Total Liabilities, Deferred Inflows Of Resources And Net Position **\$242,489**

LEA : 106169003 Union SD

Printed 12/16/2021 1:34:31 PM

Amounts Expressed in Whole Dollars	<u>Other Custodial</u> <u>(89)</u>	<u>Fiduciary Component Units</u> <u>(98)</u>	<u>Total Fiduciary Funds</u>
Liabilities, Deferred Inflows Of Resources And Net Position			
Liabilities			
0400 Due to Other Funds			
0410 Due to Other Governments, Primary Government and Component Units			
0420 Accounts Payable			
0430 Contracts Payable			
0450 Short-Term Payables			
0460 Payroll Accruals and Withholdings			
0480 Unearned Revenues			
0490 Other Current Liabilities			67,378
Total Liabilities			\$67,378
0950 Deferred Inflows of Resources			
Net Position			
0791 Net Investment in Capital Assets			
0009 Restricted Net Position (0792 – 0798)			175,111
0799 Unrestricted Net Position			
Total Net Position			\$175,111
Total Liabilities, Deferred Inflows Of Resources And Net Position			\$242,489

Amounts Expressed in Whole Dollars	<u>Private Purpose Trust</u> (71)	<u>Investment Trust</u> (72)	<u>Pension Trust</u> (73)	<u>Student Activity</u> <u>Custodial</u> (81)	<u>Other Custodial</u> (89)	<u>Fiduciary Component</u> <u>Units</u> (98)
Additions						
0091 Gifts and Contributions						
0095 Net Investment Earnings	2,361					
0092 Other Additions	20,441					
Deductions						
0093 Scholarships Awarded	5,250					
0094 Other Deductions	17					
Change In Net Position	\$17,535					
0006 Net Position – Beginning of Fiscal Year	157,576					
0007 Net Position Held in Trust for Pension Benefits						
Net Position - End of Fiscal Year	\$175,111					

Amounts Expressed in Whole Dollars	<u>Total Fiduciary Funds</u>
Additions	
0091 Gifts and Contributions	
0095 Net Investment Earnings	2,361
0092 Other Additions	20,441
Deductions	
0093 Scholarships Awarded	5,250
0094 Other Deductions	17
Change in Net Position	\$17,535
0006 Net Position – Beginning of Fiscal Year	157,576
0007 Net Position Held in Trust for Pension Benefits	
Net Position - End of Fiscal Year	\$175,111

	<u>Revenue Reported In Current Year</u>	<u>Current Year Tax Accrual</u>	<u>Prior Year Tax Accrual</u>	<u>Taxes Collected In Current Year</u>
<u>Revenue from Local Sources</u>				
6111 Current Real Estate Taxes	1,555,676.33			1,555,676.33
6113 Public Utility Realty Taxes	2,214.67			2,214.67
6114 Payments in Lieu of Current Taxes - State / Local	4,604.70			4,604.70
6120 Current Per Capita Taxes, Section 679	9,708.70			9,708.70
6141 Current Act 511 Per Capita Taxes	9,246.70			9,246.70
6143 Current Act 511 Local Services Taxes	5,283.73			5,283.73
6151 Current Act 511 Earned Income Taxes	336,486.97			336,486.97
6152 Current Act 511 Occupation Taxes	87,150.70			87,150.70
6153 Current Act 511 Real Estate Transfer Taxes	41,308.70			41,308.70
6411 Delinquent Real Estate Taxes	159,184.86			159,184.86
6420 Delinquent Per Capita Taxes, Section 679	6,654.11			6,654.11
6440 Delinquent Local Enabling Taxes - Flat Rate Assessments	46,067.65			46,067.65
6500 Earnings on Investments	43,979.38			
6700 Revenues from LEA Activities	3,630.00			
6821 State Revenue Received from Other Pennsylvania Public LEAs	67,128.60			
6832 Federal IDEA Revenue Received as Pass Through	126,764.71			
6910 Rentals	14,006.00			
6961 Transportation Services Provided Other Pennsylvania LEAs	9,711.87			
6962 Other Services Provided Other Pennsylvania LEAs	1,884.76			
6999 Other Revenues Not Specified Above	17,335.44			
TOTAL Revenue from Local Sources	\$2,548,028.58			\$2,263,587.82

**Revenue Reported
In Current Year**

Revenue from State Sources

7111 Basic Education Funding-Formula	5,787,296.24		
7112 Basic Education Funding-Social Security	239,899.73		
7271 Special Education funds for School-Aged Pupils	609,426.14		
7311 Pupil Transportation Subsidy	409,469.53		
7312 Nonpublic and Charter School Pupil Transportation Subsidy	6,930.00		
7330 Health Services (Medical, Dental, Nurse, Act 25)	10,691.53		
7340 State Property Tax Reduction Allocation	140,939.05		
7361 School Safety and Security Grants	17,293.64		
7369 Other Safe School Grants	40,950.00		
7505 Ready to Learn Block Grant	157,782.00		
7599 Other State Revenue Not Listed Elsewhere in the 7000 Series	1,000.00		
7820 State Share of Retirement Contributions	1,277,042.65		
TOTAL Revenue from State Sources	\$8,698,720.51		

**Revenue Reported
In Current Year**

Revenue from Federal Sources

8514 NCLB, Title I - Improving the Academic Achievement of the Disadvantaged	203,009.00		
8515 NCLB, Title II - Preparing, Training and Recruiting High Quality Teachers and Principals	52,192.00		
8517 NCLB, Title IV - 21St Century Schools	13,517.00		
8519 NCLB, Title VI - Flexibility and Accountability	38,741.52		
8690 Other Restricted Federal Grants-in-Aid Through the Commonwealth of PA	141,437.00		
8741 Elementary and Secondary School Emergency Relief Fund (ESSER)	146,391.00		
8742 Governor's Emergency Education Relief Fund (GEER)	2,789.48		
8810 School-Based Access Medicaid Reimbursement Program (SBAP) Reimbursements (Access)	25,684.91		
8820 Medical Assistance Reimbursement for Administrative Claiming (Quarterly) Program	1,976.05		
TOTAL Revenue from Federal Sources	\$625,737.96		

	Revenue Reported In Current Year	
<u>Other Financing Sources</u>		
9120 Proceeds from Refunding of Bonds	1,299,507.83	
9400 Sale of or Compensation for Loss of Fixed Assets	(34,024.00)	
TOTAL Other Financing Sources	\$1,265,483.83	
TOTAL FROM ALL SOURCES	\$13,137,970.88	\$2,263,587.82

LEA : 106169003 Union SD

Printed 12/16/2021 1:34:47 PM

	<u>General Fund (10)</u>	<u>Student Sponsored Activity Fund (21)</u>	<u>Public Purpose Trust (27)</u>	<u>Other Compt Approved (28)</u>	<u>Athletic / Activity (29)</u>	<u>Capital Reserve (690, 1850) (31)</u>
6000 Revenue from Local Sources						
6111 Current Real Estate Taxes	1,555,676.33					
6113 Public Utility Realty Taxes	2,214.67					
6114 Payments in Lieu of Current Taxes - State / Local	4,604.70					
6120 Current Per Capita Taxes, Section 679	9,708.70					
6141 Current Act 511 Per Capita Taxes	9,246.70					
6143 Current Act 511 Local Services Taxes	5,283.73					
6151 Current Act 511 Earned Income Taxes	336,486.97					
6152 Current Act 511 Occupation Taxes	87,150.70					
6153 Current Act 511 Real Estate Transfer Taxes	41,308.70					
6411 Delinquent Real Estate Taxes	159,184.86					
6420 Delinquent Per Capita Taxes, Section 679	6,654.11					
6440 Delinquent Local Enabling Taxes - Flat Rate Assessments	46,067.65					
6500 Earnings on Investments	43,979.38					
6700 Revenues from LEA Activities	3,630.00					
6821 State Revenue Received from Other Pennsylvania Public LEAs	67,128.60					
6832 Federal IDEA Revenue Received as Pass Through	126,764.71					
6910 Rentals	14,006.00					
6961 Transportation Services Provided Other Pennsylvania LEAs	9,711.87					
6962 Other Services Provided Other Pennsylvania LEAs	1,884.76					
6999 Other Revenues Not Specified Above	17,335.44					
6000 Total Revenue from Local Sources	\$2,548,028.58					
7000 Revenue from State Sources						
7111 Basic Education Funding-Formula	5,787,296.24					
7112 Basic Education Funding-Social Security	239,899.73					
7271 Special Education funds for School-Aged Pupils	609,426.14					
7311 Pupil Transportation Subsidy	409,469.53					
7312 Nonpublic and Charter School Pupil Transportation Subsidy	6,930.00					
7330 Health Services (Medical, Dental, Nurse, Act 25)	10,691.53					
7340 State Property Tax Reduction Allocation	140,939.05					
7361 School Safety and Security Grants	17,293.64					
7369 Other Safe School Grants	40,950.00					
7505 Ready to Learn Block Grant	157,782.00					
7599 Other State Revenue Not Listed Elsewhere in the 7000 Series	1,000.00					
7820 State Share of Retirement Contributions	1,277,042.65					
7000 Total Revenue from State Sources	\$8,698,720.51					

LEA : 106169003 Union SD

Printed 12/16/2021 1:34:47 PM

	<u>Capital Reserve</u> <u>(1431) (32)</u>	<u>Other Capital</u> <u>Projects Fund (39)</u>	<u>Debt Service (40)</u>	<u>Permanent (90)</u>	<u>Total</u>
6000 Revenue from Local Sources					
6111 Current Real Estate Taxes					1,555,676.33
6113 Public Utility Realty Taxes					2,214.67
6114 Payments in Lieu of Current Taxes - State / Local					4,604.70
6120 Current Per Capita Taxes, Section 679					9,708.70
6141 Current Act 511 Per Capita Taxes					9,246.70
6143 Current Act 511 Local Services Taxes					5,283.73
6151 Current Act 511 Earned Income Taxes					336,486.97
6152 Current Act 511 Occupation Taxes					87,150.70
6153 Current Act 511 Real Estate Transfer Taxes					41,308.70
6411 Delinquent Real Estate Taxes					159,184.86
6420 Delinquent Per Capita Taxes, Section 679					6,654.11
6440 Delinquent Local Enabling Taxes - Flat Rate Assessments					46,067.65
6500 Earnings on Investments		29.93			44,009.31
6700 Revenues from LEA Activities					3,630.00
6821 State Revenue Received from Other Pennsylvania Public LEAs					67,128.60
6832 Federal IDEA Revenue Received as Pass Through					126,764.71
6910 Rentals					14,006.00
6961 Transportation Services Provided Other Pennsylvania LEAs					9,711.87
6962 Other Services Provided Other Pennsylvania LEAs					1,884.76
6999 Other Revenues Not Specified Above					17,335.44
6000 Total Revenue from Local Sources		\$29.93			\$2,548,058.51
7000 Revenue from State Sources					
7111 Basic Education Funding-Formula					5,787,296.24
7112 Basic Education Funding-Social Security					239,899.73
7271 Special Education funds for School-Aged Pupils					609,426.14
7311 Pupil Transportation Subsidy					409,469.53
7312 Nonpublic and Charter School Pupil Transportation Subsidy					6,930.00
7330 Health Services (Medical, Dental, Nurse, Act 25)					10,691.53
7340 State Property Tax Reduction Allocation					140,939.05
7361 School Safety and Security Grants					17,293.64
7369 Other Safe School Grants					40,950.00
7505 Ready to Learn Block Grant					157,782.00
7599 Other State Revenue Not Listed Elsewhere in the 7000 Series					1,000.00
7820 State Share of Retirement Contributions					1,277,042.65
7000 Total Revenue from State Sources					\$8,698,720.51

	<u>General Fund (10)</u>	<u>Student Sponsored Activity Fund (21)</u>	<u>Public Purpose Trust (27)</u>	<u>Other Compt Approved (28)</u>	<u>Athletic / Activity (29)</u>	<u>Capital Reserve (690.1850) (31)</u>
8000 Revenue from Federal Sources						
8514 NCLB, Title I - Improving the Academic Achievement of the Disadvantaged	203,009.00					
8515 NCLB, Title II - Preparing, Training and Recruiting High Quality Teachers and Principals	52,192.00					
8517 NCLB, Title IV - 21st Century Schools	13,517.00					
8519 NCLB, Title VI - Flexibility and Accountability	38,741.52					
8690 Other Restricted Federal Grants-in-Aid Through the Commonwealth of PA	141,437.00					
8741 Elementary and Secondary School Emergency Relief Fund (ESSER)	146,391.00					
8742 Governor's Emergency Education Relief Fund (GEER)	2,789.48					
8810 School-Based Access Medicaid Reimbursement Program (SBAP) Reimbursements (Access)	25,684.91					
8820 Medical Assistance Reimbursement for Administrative Claiming (Quarterly) Program	1,976.05					
8000 Total Revenue from Federal Sources	\$625,737.96					
9000 Other Financing Sources						
9110 Face Value of Bonds Issued						
9120 Proceeds from Refunding of Bonds	1,299,507.83					
9400 Sale of or Compensation for Loss of Fixed Assets	(34,024.00)					
9000 Total Other Financing Sources	\$1,265,483.83					
Total From All Sources	\$13,137,970.88					

	<u>Capital Reserve</u> <u>(1431) (32)</u>	<u>Other Capital</u> <u>Projects Fund (39)</u>	<u>Debt Service (40)</u>	<u>Permanent (90)</u>	<u>Total</u>
8000 Revenue from Federal Sources					
8514 NCLB, Title I - Improving the Academic Achievement of the Disadvantaged					203,009.00
8515 NCLB, Title II - Preparing, Training and Recruiting High Quality Teachers and Principals					52,192.00
8517 NCLB, Title IV - 21st Century Schools					13,517.00
8519 NCLB, Title VI - Flexibility and Accountability					38,741.52
8690 Other Restricted Federal Grants-in-Aid Through the Commonwealth of PA					141,437.00
8741 Elementary and Secondary School Emergency Relief Fund (ESSER)					146,391.00
8742 Governor's Emergency Education Relief Fund (GEER)					2,789.48
8810 School-Based Access Medicaid Reimbursement Program (SBAP) Reimbursements (Access)					25,684.91
8820 Medical Assistance Reimbursement for Administrative Claiming (Quarterly) Program					1,976.05
8000 Total Revenue from Federal Sources					\$625,737.96
9000 Other Financing Sources					
9110 Face Value of Bonds Issued		1,245,672.17			1,245,672.17
9120 Proceeds from Refunding of Bonds					1,299,507.83
9400 Sale of or Compensation for Loss of Fixed Assets					(34,024.00)
9000 Total Other Financing Sources		\$1,245,672.17			\$2,511,156.00
Total From All Sources		\$1,245,702.10			\$14,383,672.98

	<u>General Fund (10)</u>	<u>Student Sponsored Activity Fund (21)</u>	<u>Public Purpose Trust (27)</u>	<u>Other Compt Approved (28)</u>	<u>Athletic / Activity (29)</u>	<u>Capital Reserve (690. 1850) (31)</u>
Revenue from Local Sources	2,548,028.58					
Revenue from State Sources	8,698,720.51					
Revenue from Federal Sources	625,737.96					
Other Financing Sources	1,265,483.83					
Total From All Sources	\$13,137,970.88					

	<u>Capital Reserve (1431)</u> <u>(32)</u>	<u>Other Capital Projects</u> <u>Fund (39)</u>	<u>Debt Service (40)</u>	<u>Permanent (90)</u>	<u>Total</u>
Revenue from Local Sources		29.93			2,548,058.51
Revenue from State Sources					8,698,720.51
Revenue from Federal Sources					625,737.96
Other Financing Sources		1,245,672.17			2,511,156.00
Total From All Sources		\$1,245,702.10			\$14,383,672.98

General Fund (10)

	<u>Total</u>
1000 Instruction	
100 Personnel Services – Salaries	
100 Personnel Services – Salaries	3,276,812.79
Total Personnel Services – Salaries	\$3,276,812.79
200 Personnel Services – Employee Benefits	
210 Group Insurance – Contracted Provider	1,006,570.03
220 Social Security Contributions	250,674.33
230 PSERS Retirement Contributions	1,118,776.45
250 Unemployment Compensation	6,092.63
260 Workers’ Compensation	12,109.50
Total Personnel Services – Employee Benefits	\$2,394,222.94
300 Purchased Professional and Technical Services	
322 Professional Educational Services – Ius	94,265.63
329 Professional Educational Services – Other	91,320.47
330 Other Professional Services	1,000.00
Total Purchased Professional and Technical Services	\$186,586.10
400 Purchased Property Services	
430 Repairs and Maintenance Services	11,815.70
Total Purchased Property Services	\$11,815.70
500 Other Purchased Services	
510 Student Transportation Services	851.55
530 Communications	209.81
561 Tuition To Other School Districts Within the State	51,275.55
562 Tuition To Pennsylvania Charter Schools	475,277.06
564 Tuition To Career and Technology Centers	290,935.99
568 Tuition To Private Residential Rehabilitative Institutions (PRRI) [In-State] and Detention Centers	40,528.02
569 Tuition – Other	171,820.38
580 Travel	1,956.95
Total Other Purchased Services	\$1,032,855.31
600 Supplies	
610 General Supplies	60,893.92
620 Energy	314.35
640 Books and Periodicals	13,992.60
650 Supplies & Fees – Technology Related	28,883.91
Total Supplies	\$104,084.78
700 Property	
756 Capitalized Technology Equipment– Original	25,000.00
766 Capitalized Technology Equipment– Replacement	53,493.25
Total Property	\$78,493.25
800 Other Objects	
810 Dues and Fees	3,832.00
Total Other Objects	\$3,832.00
Total 1000 Instruction	\$7,088,702.87

General Fund (10)

1100 Regular Programs – Elementary / Secondary	<u>Elementary</u>	<u>Secondary</u>	<u>Federal</u>	<u>Total</u>
100 Personnel Services – Salaries				
100 Personnel Services – Salaries	1,224,099.16	1,230,700.95	135,083.60	2,589,883.71
Total Personnel Services – Salaries	\$1,224,099.16	\$1,230,700.95	\$135,083.60	\$2,589,883.71
200 Personnel Services – Employee Benefits				
210 Group Insurance – Contracted Provider	367,031.69	426,645.58	45,174.03	838,851.30
220 Social Security Contributions	94,443.90	94,147.04	9,533.53	198,124.47
230 PSERS Retirement Contributions	415,605.93	424,715.81	43,007.86	883,329.60
250 Unemployment Compensation	2,388.39	2,278.04	235.64	4,902.07
260 Workers' Compensation	4,946.36	4,580.00	476.32	10,002.68
Total Personnel Services – Employee Benefits	\$884,416.27	\$952,366.47	\$98,427.38	\$1,935,210.12
300 Purchased Professional and Technical Services				
322 Professional Educational Services – lus	312.50	312.50		625.00
329 Professional Educational Services – Other	29,123.65	47,111.81		76,235.46
330 Other Professional Services		1,000.00		1,000.00
Total Purchased Professional and Technical Services	\$29,436.15	\$48,424.31		\$77,860.46
400 Purchased Property Services				
430 Repairs and Maintenance Services	3,650.39	8,156.25		11,806.64
Total Purchased Property Services	\$3,650.39	\$8,156.25		\$11,806.64
500 Other Purchased Services				
510 Student Transportation Services	731.55	120.00		851.55
561 Tuition To Other School Districts Within the State	30,237.98	11,462.58		41,700.56
562 Tuition To Pennsylvania Charter Schools	200,996.10	86,640.96		287,637.06
568 Tuition To Private Residential Rehabilitative Institutions (PRRI) [In-State] and Detention Centers		39,185.77		39,185.77
580 Travel			1,500.00	1,500.00
Total Other Purchased Services	\$231,965.63	\$137,409.31	\$1,500.00	\$370,874.94
600 Supplies				
610 General Supplies	20,422.66	20,848.46	15,359.62	56,630.74
620 Energy	0.56	93.26		93.82
640 Books and Periodicals	9,538.04	2,105.56		11,643.60
650 Supplies & Fees – Technology Related	9,788.90	15,944.29		25,733.19
Total Supplies	\$39,750.16	\$38,991.57	\$15,359.62	\$94,101.35
700 Property				
756 Capitalized Technology Equipment – Original			25,000.00	25,000.00
766 Capitalized Technology Equipment – Replacement		9,150.00	44,343.25	53,493.25
Total Property		\$9,150.00	\$69,343.25	\$78,493.25
800 Other Objects				
810 Dues and Fees		3,732.00	100.00	3,832.00
Total Other Objects		\$3,732.00	\$100.00	\$3,832.00
Total 1100 Regular Programs – Elementary / Secondary	\$2,413,317.76	\$2,428,930.86	\$319,813.85	\$5,162,062.47

General Fund (10)

1110 Regular Programs

	<u>Elementary</u>	<u>Secondary</u>	<u>Federal</u>	<u>Total</u>
100 Personnel Services – Salaries				
100 Personnel Services – Salaries	1,224,099.16	1,230,700.95	10,459.00	2,465,259.11
Total Personnel Services – Salaries	\$1,224,099.16	\$1,230,700.95	\$10,459.00	\$2,465,259.11
200 Personnel Services – Employee Benefits				
210 Group Insurance – Contracted Provider	367,031.69	426,645.58		793,677.27
220 Social Security Contributions	94,443.90	94,147.04		188,590.94
230 PSERS Retirement Contributions	415,605.93	424,715.81		840,321.74
250 Unemployment Compensation	2,388.39	2,278.04		4,666.43
260 Workers' Compensation	4,946.36	4,580.00		9,526.36
Total Personnel Services – Employee Benefits	\$884,416.27	\$952,366.47		\$1,836,782.74
300 Purchased Professional and Technical Services				
322 Professional Educational Services – lus	312.50	312.50		625.00
329 Professional Educational Services – Other	29,123.65	47,111.81		76,235.46
330 Other Professional Services		1,000.00		1,000.00
Total Purchased Professional and Technical Services	\$29,436.15	\$48,424.31		\$77,860.46
400 Purchased Property Services				
430 Repairs and Maintenance Services	3,650.39	8,156.25		11,806.64
Total Purchased Property Services	\$3,650.39	\$8,156.25		\$11,806.64
500 Other Purchased Services				
510 Student Transportation Services	731.55	120.00		851.55
561 Tuition To Other School Districts Within the State	30,237.98	11,462.58		41,700.56
562 Tuition To Pennsylvania Charter Schools	200,996.10	86,640.96		287,637.06
568 Tuition To Private Residential Rehabilitative Institutions (PRRI) [In-State] and Detention Centers		39,185.77		39,185.77
Total Other Purchased Services	\$231,965.63	\$137,409.31		\$369,374.94
600 Supplies				
610 General Supplies	20,422.66	20,848.46		41,271.12
620 Energy	0.56	93.26		93.82
640 Books and Periodicals	9,538.04	2,105.56		11,643.60
650 Supplies & Fees – Technology Related	9,788.90	15,944.29		25,733.19
Total Supplies	\$39,750.16	\$38,991.57		\$78,741.73
700 Property				
756 Capitalized Technology Equipment – Original			25,000.00	25,000.00
766 Capitalized Technology Equipment – Replacement		9,150.00	44,343.25	53,493.25
Total Property		\$9,150.00	\$69,343.25	\$78,493.25
800 Other Objects				
810 Dues and Fees		3,732.00		3,732.00
Total Other Objects		\$3,732.00		\$3,732.00
Total 1110 Regular Programs	\$2,413,317.76	\$2,428,930.86	\$79,802.25	\$4,922,050.87

General Fund (10)

1190 Federally-Funded Regular Programs	<u>Elementary</u>	<u>Secondary</u>	<u>Federal</u>	<u>Total</u>
100 Personnel Services – Salaries				
100 Personnel Services – Salaries			124,624.60	124,624.60
Total Personnel Services – Salaries			\$124,624.60	\$124,624.60
200 Personnel Services – Employee Benefits				
210 Group Insurance – Contracted Provider			45,174.03	45,174.03
220 Social Security Contributions			9,533.53	9,533.53
230 PSERS Retirement Contributions			43,007.86	43,007.86
250 Unemployment Compensation			235.64	235.64
260 Workers' Compensation			476.32	476.32
Total Personnel Services – Employee Benefits			\$98,427.38	\$98,427.38
500 Other Purchased Services				
580 Travel			1,500.00	1,500.00
Total Other Purchased Services			\$1,500.00	\$1,500.00
600 Supplies				
610 General Supplies			15,359.62	15,359.62
Total Supplies			\$15,359.62	\$15,359.62
800 Other Objects				
810 Dues and Fees			100.00	100.00
Total Other Objects			\$100.00	\$100.00
Total 1190 Federally-Funded Regular Programs			\$240,011.60	\$240,011.60

General Fund (10)

	<u>Elementary</u>	<u>Secondary</u>	<u>Federal</u>	<u>Total</u>
1200 Special Programs – Elementary / Secondary				
100 Personnel Services – Salaries				
100 Personnel Services – Salaries	255,427.18	240,517.57	146,335.33	642,280.08
Total Personnel Services – Salaries	\$255,427.18	\$240,517.57	\$146,335.33	\$642,280.08
200 Personnel Services – Employee Benefits				
210 Group Insurance – Contracted Provider	41,658.01	108,608.39	8,942.52	159,208.92
220 Social Security Contributions	19,761.72	29,372.54		49,134.26
230 PSERS Retirement Contributions	87,534.48	132,504.02		220,038.50
250 Unemployment Compensation	420.43	680.67		1,101.10
260 Workers' Compensation	769.45	1,172.50		1,941.95
Total Personnel Services – Employee Benefits	\$150,144.09	\$272,338.12	\$8,942.52	\$431,424.73
300 Purchased Professional and Technical Services				
322 Professional Educational Services – lus	14,853.46	14,853.45	63,933.72	93,640.63
329 Professional Educational Services – Other	9,807.65	4,703.58		14,511.23
Total Purchased Professional and Technical Services	\$24,661.11	\$19,557.03	\$63,933.72	\$108,151.86
400 Purchased Property Services				
430 Repairs and Maintenance Services		9.06		9.06
Total Purchased Property Services		\$9.06		\$9.06
500 Other Purchased Services				
530 Communications	15.11	194.70		209.81
561 Tuition To Other School Districts Within the State		9,574.99		9,574.99
562 Tuition To Pennsylvania Charter Schools	48,899.71	138,740.29		187,640.00
568 Tuition To Private Residential Rehabilitative Institutions (PRRI) [In-State] and Detention Centers		1,342.25		1,342.25
569 Tuition – Other	155,031.12	16,789.26		171,820.38
580 Travel	82.43	374.52		456.95
Total Other Purchased Services	\$204,028.37	\$167,016.01		\$371,044.38
600 Supplies				
610 General Supplies	1,244.20	64.99	2,953.99	4,263.18
620 Energy	9.03	211.50		220.53
640 Books and Periodicals			2,349.00	2,349.00
650 Supplies & Fees – Technology Related	677.50	677.50	1,795.72	3,150.72
Total Supplies	\$1,930.73	\$953.99	\$7,098.71	\$9,983.43
Total 1200 Special Programs – Elementary / Secondary	\$636,191.48	\$700,391.78	\$226,310.28	\$1,562,893.54

General Fund (10)

1210 Life Skills Support

	<u>Elementary</u>	<u>Secondary</u>	<u>Federal</u>	<u>Total</u>
100 Personnel Services – Salaries				
100 Personnel Services – Salaries		35,378.53	65,617.44	100,995.97
Total Personnel Services – Salaries		\$35,378.53	\$65,617.44	\$100,995.97
200 Personnel Services – Employee Benefits				
210 Group Insurance – Contracted Provider		21,679.72	2,161.80	23,841.52
220 Social Security Contributions		7,726.05		7,726.05
230 PSERS Retirement Contributions		34,853.89		34,853.89
250 Unemployment Compensation		203.21		203.21
260 Workers' Compensation		348.10		348.10
Total Personnel Services – Employee Benefits		\$64,810.97	\$2,161.80	\$66,972.77
300 Purchased Professional and Technical Services				
329 Professional Educational Services – Other		1,195.94		1,195.94
Total Purchased Professional and Technical Services		\$1,195.94		\$1,195.94
600 Supplies				
610 General Supplies			653.16	653.16
620 Energy		211.50		211.50
640 Books and Periodicals			553.30	553.30
Total Supplies		\$211.50	\$1,206.46	\$1,417.96
Total 1210 Life Skills Support		\$101,596.94	\$68,985.70	\$170,582.64

General Fund (10)

1240 Academic Support

	<u>Elementary</u>	<u>Secondary</u>	<u>Federal</u>	<u>Total</u>
100 Personnel Services – Salaries				
100 Personnel Services – Salaries	255,427.18	205,139.04	80,717.89	541,284.11
Total Personnel Services – Salaries	\$255,427.18	\$205,139.04	\$80,717.89	\$541,284.11
200 Personnel Services – Employee Benefits				
210 Group Insurance – Contracted Provider	41,658.01	86,928.67	6,780.72	135,367.40
220 Social Security Contributions	19,761.72	21,646.49		41,408.21
230 PSERS Retirement Contributions	87,534.48	97,650.13		185,184.61
250 Unemployment Compensation	420.43	477.46		897.89
260 Workers' Compensation	769.45	824.40		1,593.85
Total Personnel Services – Employee Benefits	\$150,144.09	\$207,527.15	\$6,780.72	\$364,451.96
300 Purchased Professional and Technical Services				
322 Professional Educational Services – lus	14,853.46	14,853.45	63,933.72	93,640.63
329 Professional Educational Services – Other	9,807.65	3,507.64		13,315.29
Total Purchased Professional and Technical Services	\$24,661.11	\$18,361.09	\$63,933.72	\$106,955.92
400 Purchased Property Services				
430 Repairs and Maintenance Services		9.06		9.06
Total Purchased Property Services		\$9.06		\$9.06
500 Other Purchased Services				
530 Communications	15.11	194.70		209.81
561 Tuition To Other School Districts Within the State		9,574.99		9,574.99
562 Tuition To Pennsylvania Charter Schools	48,899.71	138,740.29		187,640.00
568 Tuition To Private Residential Rehabilitative Institutions (PRRI) [In-State] and Detention Centers		1,342.25		1,342.25
569 Tuition – Other	155,031.12	16,789.26		171,820.38
580 Travel	82.43	374.52		456.95
Total Other Purchased Services	\$204,028.37	\$167,016.01		\$371,044.38
600 Supplies				
610 General Supplies	1,244.20	64.99	2,300.83	3,610.02
620 Energy	9.03			9.03
640 Books and Periodicals			1,795.70	1,795.70
650 Supplies & Fees – Technology Related	677.50	677.50	1,795.72	3,150.72
Total Supplies	\$1,930.73	\$742.49	\$5,892.25	\$8,565.47
Total 1240 Academic Support	\$636,191.48	\$598,794.84	\$157,324.58	\$1,392,310.90

General Fund (10)

	<u>Elementary</u>	<u>Secondary</u>	<u>Federal</u>	<u>Total</u>
1241 Learning Support – Public				
100 Personnel Services – Salaries				
100 Personnel Services – Salaries	224,359.57	199,292.44	80,717.89	504,369.90
Total Personnel Services – Salaries	\$224,359.57	\$199,292.44	\$80,717.89	\$504,369.90
200 Personnel Services – Employee Benefits				
210 Group Insurance – Contracted Provider	31,073.27	84,438.99	6,780.72	122,292.98
220 Social Security Contributions	17,385.10	21,199.31		38,584.41
230 PSERS Retirement Contributions	76,812.90	95,632.52		172,445.42
250 Unemployment Compensation	363.68	468.50		832.18
260 Workers' Compensation	659.52	806.07		1,465.59
Total Personnel Services – Employee Benefits	\$126,294.47	\$202,545.39	\$6,780.72	\$335,620.58
300 Purchased Professional and Technical Services				
322 Professional Educational Services – lus	14,853.46	14,853.45	63,933.72	93,640.63
329 Professional Educational Services – Other	9,807.65	3,507.64		13,315.29
Total Purchased Professional and Technical Services	\$24,661.11	\$18,361.09	\$63,933.72	\$106,955.92
400 Purchased Property Services				
430 Repairs and Maintenance Services		9.06		9.06
Total Purchased Property Services		\$9.06		\$9.06
500 Other Purchased Services				
530 Communications	15.11	194.70		209.81
561 Tuition To Other School Districts Within the State		9,574.99		9,574.99
562 Tuition To Pennsylvania Charter Schools	48,899.71	138,740.29		187,640.00
568 Tuition To Private Residential Rehabilitative Institutions (PRRI) [In-State] and Detention Centers		1,342.25		1,342.25
569 Tuition – Other	155,031.12	16,789.26		171,820.38
Total Other Purchased Services	\$203,945.94	\$166,641.49		\$370,587.43
600 Supplies				
610 General Supplies	755.59	9.99	2,300.83	3,066.41
620 Energy	9.03			9.03
640 Books and Periodicals			1,795.70	1,795.70
650 Supplies & Fees – Technology Related	677.50	677.50	1,795.72	3,150.72
Total Supplies	\$1,442.12	\$687.49	\$5,892.25	\$8,021.86
Total 1241 Learning Support – Public	\$580,703.21	\$587,536.96	\$157,324.58	\$1,325,564.75

General Fund (10)

	<u>Elementary</u>	<u>Secondary</u>	<u>Federal</u>	<u>Total</u>
1243 Gifted Support				
100 Personnel Services – Salaries				
100 Personnel Services – Salaries	31,067.61	5,846.60		36,914.21
Total Personnel Services – Salaries	\$31,067.61	\$5,846.60		\$36,914.21
200 Personnel Services – Employee Benefits				
210 Group Insurance – Contracted Provider	10,584.74	2,489.68		13,074.42
220 Social Security Contributions	2,376.62	447.18		2,823.80
230 PSERS Retirement Contributions	10,721.58	2,017.61		12,739.19
250 Unemployment Compensation	56.75	8.96		65.71
260 Workers' Compensation	109.93	18.33		128.26
Total Personnel Services – Employee Benefits	\$23,849.62	\$4,981.76		\$28,831.38
500 Other Purchased Services				
580 Travel	82.43	374.52		456.95
Total Other Purchased Services	\$82.43	\$374.52		\$456.95
600 Supplies				
610 General Supplies	488.61	55.00		543.61
Total Supplies	\$488.61	\$55.00		\$543.61
Total 1243 Gifted Support	\$55,488.27	\$11,257.88		\$66,746.15

General Fund (10)

1300 Vocational Education

	<u>Elementary</u>	<u>Secondary</u>	<u>Federal</u>	<u>Total</u>
100 Personnel Services – Salaries				
100 Personnel Services – Salaries		44,649.00		44,649.00
Total Personnel Services – Salaries		\$44,649.00		\$44,649.00
200 Personnel Services – Employee Benefits				
210 Group Insurance – Contracted Provider		8,509.81		8,509.81
220 Social Security Contributions		3,415.60		3,415.60
230 PSERS Retirement Contributions		15,408.35		15,408.35
250 Unemployment Compensation		89.46		89.46
260 Workers' Compensation		164.87		164.87
Total Personnel Services – Employee Benefits		\$27,588.09		\$27,588.09
300 Purchased Professional and Technical Services				
329 Professional Educational Services – Other		573.78		573.78
Total Purchased Professional and Technical Services		\$573.78		\$573.78
500 Other Purchased Services				
564 Tuition To Career and Technology Centers		290,935.99		290,935.99
Total Other Purchased Services		\$290,935.99		\$290,935.99
Total 1300 Vocational Education		\$363,746.86		\$363,746.86

General Fund (10)

2000 Support Services

Total

100 Personnel Services – Salaries

100 Personnel Services – Salaries 1,534,585.12

Total Personnel Services – Salaries \$1,534,585.12

200 Personnel Services – Employee Benefits

210 Group Insurance – Contracted Provider 497,659.92

220 Social Security Contributions 117,510.40

230 PSERS Retirement Contributions 516,281.52

240 Tuition Reimbursement 8,232.00

250 Unemployment Compensation 3,070.70

260 Workers' Compensation 6,137.19

Total Personnel Services – Employee Benefits \$1,148,891.73

300 Purchased Professional and Technical Services

329 Professional Educational Services – Other 5,360.04

330 Other Professional Services 126,665.19

340 Technical Services 17,606.89

360 Employee Training and Development Services 2,260.00

Total Purchased Professional and Technical Services \$151,892.12

400 Purchased Property Services

410 Cleaning Services 12,075.11

420 Utility Services 14,377.44

430 Repairs and Maintenance Services 58,475.19

440 Rentals 500.00

450 Construction Services 6,895.00

Total Purchased Property Services \$92,322.74

500 Other Purchased Services

511 Student Transportation Services from Another LEA Within the State 559.34

513 Contracted Carriers 608,760.13

519 Student Transportation Services From Other Sources 174.72

520 Insurance – General 407.00

521 Fire Insurance 34,036.00

522 Automotive Liability Insurance 7,203.50

523 General Property and Liability Insurance 7,676.20

530 Communications 45,406.85

549 Other Advertising/Public Relations 3,044.93

550 Printing and Binding 2,409.65

580 Travel 2,925.85

595 IU Payments By Withholding 4,527.57

Total Other Purchased Services \$717,131.74

600 Supplies

610 General Supplies 115,102.16

620 Energy 151,262.47

640 Books and Periodicals 3,536.65

650 Supplies & Fees – Technology Related 40,901.11

General Fund (10)

2000 Support Services

Total Supplies Total
\$310,802.39

700 Property

756 Capitalized Technology Equipment – Original 6,783.00

762 Capitalized Equipment - Replacement 26,758.40

766 Capitalized Technology Equipment – Replacement 95,321.03

Total Property **\$128,862.43**

800 Other Objects

810 Dues and Fees 55,562.90

Total Other Objects **\$55,562.90**

Total 2000 Support Services **\$4,140,051.17**

General Fund (10)

2100 Support Services – Students

	<u>Elementary</u>	<u>Secondary</u>	<u>Federal</u>	<u>Total</u>
100 Personnel Services – Salaries				
100 Personnel Services – Salaries	109,313.50	114,349.31	7,004.05	230,666.86
Total Personnel Services – Salaries	\$109,313.50	\$114,349.31	\$7,004.05	\$230,666.86
200 Personnel Services – Employee Benefits				
210 Group Insurance – Contracted Provider	35,528.09	11,618.62	3,792.58	50,939.29
220 Social Security Contributions	8,630.13	9,015.60		17,645.73
230 PSERS Retirement Contributions	38,259.62	38,651.62		76,911.24
250 Unemployment Compensation	240.02	249.11		489.13
260 Workers' Compensation	476.31	476.31		952.62
Total Personnel Services – Employee Benefits	\$83,134.17	\$60,011.26	\$3,792.58	\$146,938.01
300 Purchased Professional and Technical Services				
330 Other Professional Services	16,975.00	17,975.00	13,538.85	73,791.45
Total Purchased Professional and Technical Services	\$16,975.00	\$17,975.00	\$13,538.85	\$73,791.45
400 Purchased Property Services				
430 Repairs and Maintenance Services		332.16		332.16
Total Purchased Property Services		\$332.16		\$332.16
500 Other Purchased Services				
530 Communications	152.21	606.28		758.49
580 Travel	414.11	123.00		537.11
Total Other Purchased Services	\$566.32	\$729.28		\$1,295.60
600 Supplies				
610 General Supplies	533.57	2,615.09		3,148.66
640 Books and Periodicals	1,751.34	1,751.33		3,502.67
650 Supplies & Fees – Technology Related	314.98	1,914.97		2,229.95
Total Supplies	\$2,599.89	\$6,281.39		\$8,881.28
Total 2100 Support Services – Students	\$212,588.88	\$199,678.40	\$24,335.48	\$461,905.36

General Fund (10)

2120 Guidance Services

	<u>Elementary</u>	<u>Secondary</u>	<u>Federal</u>	<u>Total</u>
100 Personnel Services – Salaries				
100 Personnel Services – Salaries	68,914.00	73,949.95		142,863.95
Total Personnel Services – Salaries	\$68,914.00	\$73,949.95		\$142,863.95
200 Personnel Services – Employee Benefits				
210 Group Insurance – Contracted Provider	24,897.85	988.69		25,886.54
220 Social Security Contributions	5,271.75	5,657.13		10,928.88
230 PSERS Retirement Contributions	23,782.19	24,174.21		47,956.40
250 Unemployment Compensation	125.78	134.87		260.65
260 Workers' Compensation	256.47	256.47		512.94
Total Personnel Services – Employee Benefits	\$54,334.04	\$31,211.37		\$85,545.41
400 Purchased Property Services				
430 Repairs and Maintenance Services		332.16		332.16
Total Purchased Property Services		\$332.16		\$332.16
500 Other Purchased Services				
530 Communications		454.07		454.07
580 Travel	291.11			291.11
Total Other Purchased Services	\$291.11	\$454.07		\$745.18
600 Supplies				
610 General Supplies	211.71	2,293.22		2,504.93
650 Supplies & Fees – Technology Related		1,600.00		1,600.00
Total Supplies	\$211.71	\$3,893.22		\$4,104.93
Total 2120 Guidance Services	\$123,750.86	\$109,840.77		\$233,591.63

General Fund (10)

	<u>Elementary</u>	<u>Secondary</u>	<u>Federal</u>	<u>Total</u>
2140 Psychological Services				
100 Personnel Services – Salaries				
100 Personnel Services – Salaries	3,253.82	3,253.83	4,202.01	10,709.66
Total Personnel Services – Salaries	\$3,253.82	\$3,253.83	\$4,202.01	\$10,709.66
200 Personnel Services – Employee Benefits				
210 Group Insurance – Contracted Provider	2,125.90	2,125.89	2,275.32	6,527.11
220 Social Security Contributions	409.64	409.62		819.26
230 PSERS Retirement Contributions	1,847.95	1,847.95		3,695.90
250 Unemployment Compensation	41.24	41.24		82.48
260 Workers' Compensation	73.28	73.27		146.55
Total Personnel Services – Employee Benefits	\$4,498.01	\$4,497.97	\$2,275.32	\$11,271.30
300 Purchased Professional and Technical Services				
330 Other Professional Services	16,975.00	17,975.00		34,950.00
Total Purchased Professional and Technical Services	\$16,975.00	\$17,975.00		\$34,950.00
600 Supplies				
610 General Supplies	192.48	192.49		384.97
640 Books and Periodicals	1,751.34	1,751.33		3,502.67
650 Supplies & Fees – Technology Related	314.98	314.97		629.95
Total Supplies	\$2,258.80	\$2,258.79		\$4,517.59
Total 2140 Psychological Services	\$26,985.63	\$27,985.59	\$6,477.33	\$61,448.55

General Fund (10)

2150 Speech Pathology and Audiology Services

	<u>Elementary</u>	<u>Secondary</u>	<u>Federal</u>	<u>Total</u>
100 Personnel Services – Salaries				
100 Personnel Services – Salaries	20,765.68	20,765.53	2,802.04	44,333.25
Total Personnel Services – Salaries	\$20,765.68	\$20,765.53	\$2,802.04	\$44,333.25
200 Personnel Services – Employee Benefits				
210 Group Insurance – Contracted Provider	7,914.66	7,914.55	1,517.26	17,346.47
220 Social Security Contributions	1,695.70	1,695.75		3,391.45
230 PSERS Retirement Contributions	7,649.70	7,649.68		15,299.38
250 Unemployment Compensation	44.73	44.73		89.46
260 Workers' Compensation	91.60	91.60		183.20
Total Personnel Services – Employee Benefits	\$17,396.39	\$17,396.31	\$1,517.26	\$36,309.96
500 Other Purchased Services				
580 Travel	123.00	123.00		246.00
Total Other Purchased Services	\$123.00	\$123.00		\$246.00
Total 2150 Speech Pathology and Audiology Services	\$38,285.07	\$38,284.84	\$4,319.30	\$80,889.21

General Fund (10)

2160 Social Work Services

Elementary

Secondary

Federal

Total

300 Purchased Professional and Technical Services

330 Other Professional Services

13,538.85

38,841.45

Total Purchased Professional and Technical Services

\$13,538.85

\$38,841.45

Total 2160 Social Work Services

\$13,538.85

\$38,841.45

General Fund (10)

	<u>Elementary</u>	<u>Secondary</u>	<u>Federal</u>	<u>Total</u>
2190 Other Student Services				
100 Personnel Services – Salaries				
100 Personnel Services – Salaries	16,380.00	16,380.00		32,760.00
Total Personnel Services – Salaries	\$16,380.00	\$16,380.00		\$32,760.00
200 Personnel Services – Employee Benefits				
210 Group Insurance – Contracted Provider	589.68	589.49		1,179.17
220 Social Security Contributions	1,253.04	1,253.10		2,506.14
230 PSERS Retirement Contributions	4,979.78	4,979.78		9,959.56
250 Unemployment Compensation	28.27	28.27		56.54
260 Workers' Compensation	54.96	54.97		109.93
Total Personnel Services – Employee Benefits	\$6,905.73	\$6,905.61		\$13,811.34
500 Other Purchased Services				
530 Communications	152.21	152.21		304.42
Total Other Purchased Services	\$152.21	\$152.21		\$304.42
600 Supplies				
610 General Supplies	129.38	129.38		258.76
Total Supplies	\$129.38	\$129.38		\$258.76
Total 2190 Other Student Services	\$23,567.32	\$23,567.20		\$47,134.52

General Fund (10)

	<u>Elementary</u>	<u>Secondary</u>	<u>Federal</u>	<u>Total</u>
2200 Support Services – Instructional Staff				
100 Personnel Services – Salaries				
100 Personnel Services – Salaries	54,815.22	18,231.42	22,683.00	95,729.64
Total Personnel Services – Salaries	\$54,815.22	\$18,231.42	\$22,683.00	\$95,729.64
200 Personnel Services – Employee Benefits				
210 Group Insurance – Contracted Provider	11,221.03	8,737.67		19,958.70
220 Social Security Contributions	5,072.85	2,274.19		7,347.04
230 PSERS Retirement Contributions	22,830.80	10,205.64		33,036.44
240 Tuition Reimbursement		2,400.00		2,400.00
250 Unemployment Compensation	81.59	48.24		129.83
260 Workers' Compensation	73.27	18.33		91.60
Total Personnel Services – Employee Benefits	\$39,279.54	\$23,684.07		\$62,963.61
300 Purchased Professional and Technical Services				
329 Professional Educational Services – Other	100.31			100.31
360 Employee Training and Development Services	677.50	787.50		1,465.00
Total Purchased Professional and Technical Services	\$777.81	\$787.50		\$1,565.31
400 Purchased Property Services				
430 Repairs and Maintenance Services	96.52	96.52		193.04
Total Purchased Property Services	\$96.52	\$96.52		\$193.04
600 Supplies				
610 General Supplies	452.99	440.00	1,412.00	2,304.99
650 Supplies & Fees – Technology Related	1,261.89	1,358.89	10,504.14	13,124.92
Total Supplies	\$1,714.88	\$1,798.89	\$11,916.14	\$15,429.91
700 Property				
756 Capitalized Technology Equipment – Original			6,783.00	6,783.00
Total Property			\$6,783.00	\$6,783.00
800 Other Objects				
810 Dues and Fees	150.00			150.00
Total Other Objects	\$150.00			\$150.00
Total 2200 Support Services – Instructional Staff	\$96,833.97	\$44,598.40	\$41,382.14	\$182,814.51

General Fund (10)

2250 School Library Services

	<u>Elementary</u>	<u>Secondary</u>	<u>Federal</u>	<u>Total</u>
100 Personnel Services – Salaries				
100 Personnel Services – Salaries	36,583.80			36,583.80
Total Personnel Services – Salaries	\$36,583.80			\$36,583.80
200 Personnel Services – Employee Benefits				
210 Group Insurance – Contracted Provider	2,483.13			2,483.13
220 Social Security Contributions	2,798.70			2,798.70
230 PSERS Retirement Contributions	12,625.16			12,625.16
250 Unemployment Compensation	41.59	8.25		49.84
260 Workers' Compensation	73.27	18.33		91.60
Total Personnel Services – Employee Benefits	\$18,021.85	\$26.58		\$18,048.43
300 Purchased Professional and Technical Services				
329 Professional Educational Services – Other	100.31			100.31
Total Purchased Professional and Technical Services	\$100.31			\$100.31
600 Supplies				
610 General Supplies	12.99			12.99
650 Supplies & Fees – Technology Related	1,055.39	1,152.39	10,504.14	12,711.92
Total Supplies	\$1,068.38	\$1,152.39	\$10,504.14	\$12,724.91
700 Property				
756 Capitalized Technology Equipment – Original			6,783.00	6,783.00
Total Property			\$6,783.00	\$6,783.00
Total 2250 School Library Services	\$55,774.34	\$1,178.97	\$17,287.14	\$74,240.45

General Fund (10)

2260 Instruction and Curriculum Development Services

	<u>Elementary</u>	<u>Secondary</u>	<u>Federal</u>	<u>Total</u>
100 Personnel Services – Salaries				
100 Personnel Services – Salaries	18,231.42	18,231.42	22,683.00	59,145.84
Total Personnel Services – Salaries	\$18,231.42	\$18,231.42	\$22,683.00	\$59,145.84
200 Personnel Services – Employee Benefits				
210 Group Insurance – Contracted Provider	8,737.90	8,737.67		17,475.57
220 Social Security Contributions	2,274.15	2,274.19		4,548.34
230 PSERS Retirement Contributions	10,205.64	10,205.64		20,411.28
250 Unemployment Compensation	40.00	39.99		79.99
Total Personnel Services – Employee Benefits	\$21,257.69	\$21,257.49		\$42,515.18
400 Purchased Property Services				
430 Repairs and Maintenance Services	96.52	96.52		193.04
Total Purchased Property Services	\$96.52	\$96.52		\$193.04
600 Supplies				
610 General Supplies			1,412.00	1,412.00
650 Supplies & Fees – Technology Related	206.50	206.50		413.00
Total Supplies	\$206.50	\$206.50	\$1,412.00	\$1,825.00
Total 2260 Instruction and Curriculum Development Services	\$39,792.13	\$39,791.93	\$24,095.00	\$103,679.06

General Fund (10)

2270 Instructional Staff Professional Development Services	<u>Elementary</u>	<u>Secondary</u>	<u>Federal</u>	<u>Total</u>
200 Personnel Services – Employee Benefits				
240 Tuition Reimbursement		2,400.00		2,400.00
Total Personnel Services – Employee Benefits		\$2,400.00		\$2,400.00
300 Purchased Professional and Technical Services				
360 Employee Training and Development Services	677.50	787.50		1,465.00
Total Purchased Professional and Technical Services	\$677.50	\$787.50		\$1,465.00
600 Supplies				
610 General Supplies	440.00	440.00		880.00
Total Supplies	\$440.00	\$440.00		\$880.00
800 Other Objects				
810 Dues and Fees	150.00			150.00
Total Other Objects	\$150.00			\$150.00
Total 2270 Instructional Staff Professional Development Services	\$1,267.50	\$3,627.50		\$4,895.00

General Fund (10)

2300 Support Services – Administration

	<u>Elementary</u>	<u>Secondary</u>	<u>Federal</u>	<u>Total</u>
100 Personnel Services – Salaries				
100 Personnel Services – Salaries	119,968.32	133,737.06		461,448.54
Total Personnel Services – Salaries	\$119,968.32	\$133,737.06		\$461,448.54
200 Personnel Services – Employee Benefits				
210 Group Insurance – Contracted Provider	28,704.29	42,620.64		154,628.06
220 Social Security Contributions	9,190.10	10,257.96		35,370.26
230 PSERS Retirement Contributions	40,055.05	46,152.85		151,448.34
250 Unemployment Compensation	219.97	247.61		727.47
260 Workers' Compensation	512.95	476.33		1,685.46
Total Personnel Services – Employee Benefits	\$78,682.36	\$99,755.39		\$343,859.59
300 Purchased Professional and Technical Services				
329 Professional Educational Services – Other	781.49	4,478.24		5,259.73
330 Other Professional Services				48,595.41
Total Purchased Professional and Technical Services	\$781.49	\$4,478.24		\$53,855.14
400 Purchased Property Services				
430 Repairs and Maintenance Services	710.20	11,020.77		11,730.97
Total Purchased Property Services	\$710.20	\$11,020.77		\$11,730.97
500 Other Purchased Services				
520 Insurance – General				407.00
530 Communications	903.07	2,017.98		2,921.05
549 Other Advertising/Public Relations				3,044.93
580 Travel	300.00	360.00		2,049.78
Total Other Purchased Services	\$1,203.07	\$2,377.98		\$8,422.76
600 Supplies				
610 General Supplies	3,153.74	1,215.24		9,471.59
620 Energy				140.01
640 Books and Periodicals		33.98		33.98
650 Supplies & Fees – Technology Related	2,573.00			6,428.20
Total Supplies	\$5,726.74	\$1,249.22		\$16,073.78
700 Property				
762 Capitalized Equipment - Replacement		2,418.19		2,418.19
Total Property		\$2,418.19		\$2,418.19
800 Other Objects				
810 Dues and Fees	745.00	865.00		54,523.02
Total Other Objects	\$745.00	\$865.00		\$54,523.02
Total 2300 Support Services – Administration	\$207,817.18	\$255,901.85		\$952,331.99

General Fund (10)

2310 Board Services

Elementary

Secondary

Federal

Total

100 Personnel Services – Salaries

100 Personnel Services – Salaries 1,694.94

Total Personnel Services – Salaries \$1,694.94

200 Personnel Services – Employee Benefits

220 Social Security Contributions 129.74

230 PSERS Retirement Contributions 585.00

250 Unemployment Compensation 8.46

Total Personnel Services – Employee Benefits \$723.20

300 Purchased Professional and Technical Services

330 Other Professional Services 17,250.00

Total Purchased Professional and Technical Services \$17,250.00

500 Other Purchased Services

520 Insurance – General 407.00

549 Other Advertising/Public Relations 3,044.93

580 Travel 490.43

Total Other Purchased Services \$3,942.36

600 Supplies

610 General Supplies 63.84

Total Supplies \$63.84

800 Other Objects

810 Dues and Fees 5,788.02

Total Other Objects \$5,788.02

Total 2310 Board Services \$29,462.36

General Fund (10)

	<u>Elementary</u>	<u>Secondary</u>	<u>Federal</u>	<u>Total</u>
2330 Tax Assessment and Collection Services				
100 Personnel Services – Salaries				
100 Personnel Services – Salaries				18,535.50
Total Personnel Services – Salaries				\$18,535.50
200 Personnel Services – Employee Benefits				
220 Social Security Contributions				1,418.03
Total Personnel Services – Employee Benefits				\$1,418.03
300 Purchased Professional and Technical Services				
330 Other Professional Services				15,881.41
Total Purchased Professional and Technical Services				\$15,881.41
600 Supplies				
610 General Supplies				4,217.67
Total Supplies				\$4,217.67
Total 2330 Tax Assessment and Collection Services				\$40,052.61

General Fund (10)

2350 Legal and Accounting Services

Elementary

Secondary

Federal

Total

300 Purchased Professional and Technical Services

330 Other Professional Services

15,464.00

Total Purchased Professional and Technical Services

\$15,464.00

Total 2350 Legal and Accounting Services

\$15,464.00

General Fund (10)

	<u>Elementary</u>	<u>Secondary</u>	<u>Federal</u>	<u>Total</u>
2360 Office of the Superintendent / Executive Director Services				
100 Personnel Services – Salaries				
100 Personnel Services – Salaries				151,438.50
Total Personnel Services – Salaries				\$151,438.50
200 Personnel Services – Employee Benefits				
210 Group Insurance – Contracted Provider				57,199.85
220 Social Security Contributions				11,607.69
230 PSERS Retirement Contributions				52,206.12
250 Unemployment Compensation				187.23
260 Workers' Compensation				567.93
Total Personnel Services – Employee Benefits				\$121,768.82
500 Other Purchased Services				
580 Travel				539.78
Total Other Purchased Services				\$539.78
600 Supplies				
610 General Supplies				711.04
620 Energy				140.01
650 Supplies & Fees – Technology Related				3,855.20
Total Supplies				\$4,706.25
800 Other Objects				
810 Dues and Fees				945.00
Total Other Objects				\$945.00
Total 2360 Office of the Superintendent / Executive Director Services				\$279,398.35

General Fund (10)

2380 Office of the Principal Services

	<u>Elementary</u>	<u>Secondary</u>	<u>Federal</u>	<u>Total</u>
100 Personnel Services – Salaries				
100 Personnel Services – Salaries	119,968.32	133,737.06		253,705.38
Total Personnel Services – Salaries	\$119,968.32	\$133,737.06		\$253,705.38
200 Personnel Services – Employee Benefits				
210 Group Insurance – Contracted Provider	28,704.29	42,620.64		71,324.93
220 Social Security Contributions	9,190.10	10,257.96		19,448.06
230 PSERS Retirement Contributions	40,055.05	46,152.85		86,207.90
250 Unemployment Compensation	219.97	247.61		467.58
260 Workers' Compensation	512.95	476.33		989.28
Total Personnel Services – Employee Benefits	\$78,682.36	\$99,755.39		\$178,437.75
300 Purchased Professional and Technical Services				
329 Professional Educational Services – Other	781.49	4,478.24		5,259.73
Total Purchased Professional and Technical Services	\$781.49	\$4,478.24		\$5,259.73
400 Purchased Property Services				
430 Repairs and Maintenance Services	710.20	11,020.77		11,730.97
Total Purchased Property Services	\$710.20	\$11,020.77		\$11,730.97
500 Other Purchased Services				
530 Communications	903.07	2,017.98		2,921.05
580 Travel	300.00	360.00		660.00
Total Other Purchased Services	\$1,203.07	\$2,377.98		\$3,581.05
600 Supplies				
610 General Supplies	3,153.74	1,215.24		4,368.98
640 Books and Periodicals		33.98		33.98
650 Supplies & Fees – Technology Related	2,573.00			2,573.00
Total Supplies	\$5,726.74	\$1,249.22		\$6,975.96
700 Property				
762 Capitalized Equipment - Replacement		2,418.19		2,418.19
Total Property		\$2,418.19		\$2,418.19
800 Other Objects				
810 Dues and Fees	745.00	865.00		1,610.00
Total Other Objects	\$745.00	\$865.00		\$1,610.00
Total 2380 Office of the Principal Services	\$207,817.18	\$255,901.85		\$463,719.03

General Fund (10)

2390 Other Administration Services

Elementary Secondary Federal Total

100 Personnel Services – Salaries

100 Personnel Services – Salaries 36,074.22

Total Personnel Services – Salaries \$36,074.22

200 Personnel Services – Employee Benefits

210 Group Insurance – Contracted Provider 26,103.28

220 Social Security Contributions 2,766.74

230 PSERS Retirement Contributions 12,449.32

250 Unemployment Compensation 64.20

260 Workers' Compensation 128.25

Total Personnel Services – Employee Benefits \$41,511.79

500 Other Purchased Services

580 Travel 359.57

Total Other Purchased Services \$359.57

600 Supplies

610 General Supplies 110.06

Total Supplies \$110.06

800 Other Objects

810 Dues and Fees 46,180.00

Total Other Objects \$46,180.00

Total 2390 Other Administration Services \$124,235.64

General Fund (10)

2400 Support Services – Pupil Health

100 Personnel Services – Salaries

100 Personnel Services – Salaries

Elementary Secondary Federal Total

85,631.32

Total Personnel Services – Salaries

\$85,631.32

200 Personnel Services – Employee Benefits

210 Group Insurance – Contracted Provider

33,866.17

220 Social Security Contributions

6,550.95

230 PSERS Retirement Contributions

28,205.40

250 Unemployment Compensation

366.54

260 Workers' Compensation

274.80

Total Personnel Services – Employee Benefits

\$69,263.86

300 Purchased Professional and Technical Services

330 Other Professional Services

532.00

Total Purchased Professional and Technical Services

\$532.00

400 Purchased Property Services

430 Repairs and Maintenance Services

106.00

Total Purchased Property Services

\$106.00

500 Other Purchased Services

530 Communications

337.56

Total Other Purchased Services

\$337.56

600 Supplies

610 General Supplies

289.88

5,762.61

Total Supplies

\$289.88

\$5,762.61

Total 2400 Support Services – Pupil Health

\$289.88

\$161,633.35

General Fund (10)

2440 Nursing Services

	<u>Elementary</u>	<u>Secondary</u>	<u>Federal</u>	<u>Total</u>
100 Personnel Services – Salaries				
100 Personnel Services – Salaries				85,631.32
Total Personnel Services – Salaries				\$85,631.32
200 Personnel Services – Employee Benefits				
210 Group Insurance – Contracted Provider				33,866.17
220 Social Security Contributions				6,550.95
230 PSERS Retirement Contributions				28,205.40
250 Unemployment Compensation				366.54
260 Workers' Compensation				274.80
Total Personnel Services – Employee Benefits				\$69,263.86
300 Purchased Professional and Technical Services				
330 Other Professional Services				532.00
Total Purchased Professional and Technical Services				\$532.00
400 Purchased Property Services				
430 Repairs and Maintenance Services				106.00
Total Purchased Property Services				\$106.00
500 Other Purchased Services				
530 Communications				337.56
Total Other Purchased Services				\$337.56
600 Supplies				
610 General Supplies			289.88	5,762.61
Total Supplies			\$289.88	\$5,762.61
Total 2440 Nursing Services			\$289.88	\$161,633.35

General Fund (10)

	<u>Elementary</u>	<u>Secondary</u>	<u>Federal</u>	<u>Total</u>
2500 Support Services – Business				
100 Personnel Services – Salaries				
100 Personnel Services – Salaries				55,110.38
Total Personnel Services – Salaries				\$55,110.38
200 Personnel Services – Employee Benefits				
210 Group Insurance – Contracted Provider				25,198.14
220 Social Security Contributions				4,219.36
230 PSERS Retirement Contributions				19,018.48
250 Unemployment Compensation				96.85
260 Workers' Compensation				183.20
Total Personnel Services – Employee Benefits				\$48,716.03
300 Purchased Professional and Technical Services				
330 Other Professional Services				2,539.73
Total Purchased Professional and Technical Services				\$2,539.73
400 Purchased Property Services				
430 Repairs and Maintenance Services				10,123.17
Total Purchased Property Services				\$10,123.17
500 Other Purchased Services				
530 Communications				1,902.02
550 Printing and Binding				2,409.65
580 Travel				338.96
Total Other Purchased Services				\$4,650.63
600 Supplies				
610 General Supplies				2,090.21
650 Supplies & Fees – Technology Related				1,027.36
Total Supplies				\$3,117.57
800 Other Objects				
810 Dues and Fees				881.88
Total Other Objects				\$881.88
Total 2500 Support Services – Business				\$125,139.39

General Fund (10)

2510 Fiscal Services

Elementary

Secondary

Federal

Total

100 Personnel Services – Salaries

100 Personnel Services – Salaries

55,110.38

Total Personnel Services – Salaries

\$55,110.38

200 Personnel Services – Employee Benefits

210 Group Insurance – Contracted Provider

25,198.14

220 Social Security Contributions

4,219.36

230 PSERS Retirement Contributions

19,018.48

250 Unemployment Compensation

96.85

260 Workers' Compensation

183.20

Total Personnel Services – Employee Benefits

\$48,716.03

300 Purchased Professional and Technical Services

330 Other Professional Services

2,539.73

Total Purchased Professional and Technical Services

\$2,539.73

400 Purchased Property Services

430 Repairs and Maintenance Services

10,123.17

Total Purchased Property Services

\$10,123.17

500 Other Purchased Services

530 Communications

1,902.02

550 Printing and Binding

2,409.65

580 Travel

338.96

Total Other Purchased Services

\$4,650.63

600 Supplies

610 General Supplies

2,090.21

650 Supplies & Fees – Technology Related

1,027.36

Total Supplies

\$3,117.57

800 Other Objects

810 Dues and Fees

881.88

Total Other Objects

\$881.88

Total 2510 Fiscal Services

\$125,139.39

General Fund (10)

2511 Supervision of Fiscal Services - Head of Component

Elementary Secondary Federal Total

100 Personnel Services – Salaries				
100 Personnel Services – Salaries				55,110.38
Total Personnel Services – Salaries				\$55,110.38
200 Personnel Services – Employee Benefits				
210 Group Insurance – Contracted Provider				25,198.14
220 Social Security Contributions				4,219.36
230 PSERS Retirement Contributions				19,018.48
250 Unemployment Compensation				96.85
260 Workers' Compensation				183.20
Total Personnel Services – Employee Benefits				\$48,716.03
300 Purchased Professional and Technical Services				
330 Other Professional Services				2,539.73
Total Purchased Professional and Technical Services				\$2,539.73
400 Purchased Property Services				
430 Repairs and Maintenance Services				10,123.17
Total Purchased Property Services				\$10,123.17
500 Other Purchased Services				
530 Communications				1,902.02
550 Printing and Binding				2,409.65
580 Travel				338.96
Total Other Purchased Services				\$4,650.63
600 Supplies				
610 General Supplies				2,090.21
650 Supplies & Fees – Technology Related				1,027.36
Total Supplies				\$3,117.57
800 Other Objects				
810 Dues and Fees				881.88
Total Other Objects				\$881.88
Total 2511 Supervision of Fiscal Services - Head of Component				\$125,139.39

General Fund (10)

2610 Supervision of Operation and Maintenance of Plant Services

Elementary

Secondary

Federal

Total

100 Personnel Services – Salaries

100 Personnel Services – Salaries

86,234.80

Total Personnel Services – Salaries

\$86,234.80

200 Personnel Services – Employee Benefits

210 Group Insurance – Contracted Provider

51,034.61

220 Social Security Contributions

6,603.85

230 PSERS Retirement Contributions

29,759.57

250 Unemployment Compensation

154.20

260 Workers' Compensation

311.42

Total Personnel Services – Employee Benefits

\$87,863.65

Total 2610 Supervision of Operation and Maintenance of Plant Services

\$174,098.45

General Fund (10)

2611 Supervision of Operation and Maintenance of Plant Services – Head of Component

Elementary

Secondary

Federal

Total

100 Personnel Services – Salaries

100 Personnel Services – Salaries

45,788.01

Total Personnel Services – Salaries

\$45,788.01

200 Personnel Services – Employee Benefits

210 Group Insurance – Contracted Provider

27,625.72

220 Social Security Contributions

3,509.70

230 PSERS Retirement Contributions

15,801.47

250 Unemployment Compensation

81.23

260 Workers' Compensation

164.87

Total Personnel Services – Employee Benefits

\$47,182.99

Total 2611 Supervision of Operation and Maintenance of Plant Services – Head of Component

\$92,971.00

General Fund (10)

2619 Supervision of Operation and Maintenance of Plant Services – All Other Supervision

Elementary

Secondary

Federal

Total

100 Personnel Services – Salaries

100 Personnel Services – Salaries

40,446.79

Total Personnel Services – Salaries

\$40,446.79

200 Personnel Services – Employee Benefits

210 Group Insurance – Contracted Provider

23,408.89

220 Social Security Contributions

3,094.15

230 PSERS Retirement Contributions

13,958.10

250 Unemployment Compensation

72.97

260 Workers' Compensation

146.55

Total Personnel Services – Employee Benefits

\$40,680.66

Total 2619 Supervision of Operation and Maintenance of Plant Services – All Other Supervision

\$81,127.45

General Fund (10)

2620 Operation of Buildings Services

100 Personnel Services – Salaries

100 Personnel Services – Salaries				320,495.43
-----------------------------------	--	--	--	------------

Total Personnel Services – Salaries				\$320,495.43
--	--	--	--	---------------------

200 Personnel Services – Employee Benefits

210 Group Insurance – Contracted Provider				104,541.38
---	--	--	--	------------

220 Social Security Contributions				24,518.24
-----------------------------------	--	--	--	-----------

230 PSERS Retirement Contributions				109,189.53
------------------------------------	--	--	--	------------

250 Unemployment Compensation				732.17
-------------------------------	--	--	--	--------

260 Workers' Compensation				1,172.48
---------------------------	--	--	--	----------

Total Personnel Services – Employee Benefits				\$240,153.80
---	--	--	--	---------------------

300 Purchased Professional and Technical Services

340 Technical Services				17,606.89
------------------------	--	--	--	-----------

Total Purchased Professional and Technical Services				\$17,606.89
--	--	--	--	--------------------

400 Purchased Property Services

410 Cleaning Services				12,075.11
-----------------------	--	--	--	-----------

420 Utility Services				14,377.44
----------------------	--	--	--	-----------

430 Repairs and Maintenance Services				35,989.85
--------------------------------------	--	--	--	-----------

440 Rentals				500.00
-------------	--	--	--	--------

450 Construction Services				6,895.00
---------------------------	--	--	--	----------

Total Purchased Property Services				\$69,837.40
--	--	--	--	--------------------

500 Other Purchased Services

521 Fire Insurance				34,036.00
--------------------	--	--	--	-----------

522 Automotive Liability Insurance				7,203.50
------------------------------------	--	--	--	----------

523 General Property and Liability Insurance				7,676.20
--	--	--	--	----------

530 Communications			4,887.36	39,487.73
--------------------	--	--	----------	-----------

Total Other Purchased Services			\$4,887.36	\$88,403.43
---------------------------------------	--	--	-------------------	--------------------

600 Supplies

610 General Supplies	32,501.22		12,911.67	89,357.56
----------------------	-----------	--	-----------	-----------

620 Energy		43,944.67		151,122.46
------------	--	-----------	--	------------

Total Supplies	\$32,501.22	\$43,944.67	\$12,911.67	\$240,480.02
-----------------------	--------------------	--------------------	--------------------	---------------------

700 Property

762 Capitalized Equipment - Replacement				15,492.20
---	--	--	--	-----------

Total Property				\$15,492.20
-----------------------	--	--	--	--------------------

800 Other Objects

810 Dues and Fees				8.00
-------------------	--	--	--	------

Total Other Objects				\$8.00
----------------------------	--	--	--	---------------

Total 2620 Operation of Buildings Services	\$32,501.22	\$43,944.67	\$17,799.03	\$992,477.17
---	--------------------	--------------------	--------------------	---------------------

General Fund (10)

	<u>Elementary</u>	<u>Secondary</u>	<u>Federal</u>	<u>Total</u>
2660 Safety and Security Services				
100 Personnel Services – Salaries				
100 Personnel Services – Salaries				68,891.83
Total Personnel Services – Salaries				\$68,891.83
200 Personnel Services – Employee Benefits				
210 Group Insurance – Contracted Provider				531.75
220 Social Security Contributions				5,270.27
230 PSERS Retirement Contributions				23,774.70
250 Unemployment Compensation				144.60
260 Workers' Compensation				1,007.60
Total Personnel Services – Employee Benefits				\$30,728.92
300 Purchased Professional and Technical Services				
330 Other Professional Services				1,206.60
Total Purchased Professional and Technical Services				\$1,206.60
600 Supplies				
610 General Supplies		2,890.19		2,890.19
Total Supplies		\$2,890.19		\$2,890.19
Total 2660 Safety and Security Services		\$2,890.19		\$103,717.54

General Fund (10)

	<u>Elementary</u>	<u>Secondary</u>	<u>Federal</u>	<u>Total</u>
2700 Student Transportation Services				
100 Personnel Services – Salaries				
100 Personnel Services – Salaries				9,123.52
Total Personnel Services – Salaries				\$9,123.52
200 Personnel Services – Employee Benefits				
210 Group Insurance – Contracted Provider				2,737.78
220 Social Security Contributions				698.02
230 PSERS Retirement Contributions				3,148.58
250 Unemployment Compensation				8.91
260 Workers' Compensation				18.33
Total Personnel Services – Employee Benefits				\$6,611.62
500 Other Purchased Services				
511 Student Transportation Services from Another LEA Within the State				559.34
513 Contracted Carriers				608,760.13
519 Student Transportation Services From Other Sources				174.72
Total Other Purchased Services				\$609,494.19
600 Supplies				
610 General Supplies				76.35
650 Supplies & Fees – Technology Related				3,250.00
Total Supplies				\$3,326.35
Total 2700 Student Transportation Services				\$628,555.68

General Fund (10)

2710 Supervision of Student Transportation Services

Elementary

Secondary

Federal

Total

100 Personnel Services – Salaries

100 Personnel Services – Salaries

9,123.52

Total Personnel Services – Salaries

\$9,123.52

200 Personnel Services – Employee Benefits

210 Group Insurance – Contracted Provider

2,737.78

220 Social Security Contributions

698.02

230 PSERS Retirement Contributions

3,148.58

250 Unemployment Compensation

8.91

260 Workers' Compensation

18.33

Total Personnel Services – Employee Benefits

\$6,611.62

Total 2710 Supervision of Student Transportation Services

\$15,735.14

General Fund (10)

2711 Supervision of Student Transportation Services – Head of Component

Elementary

Secondary

Federal

Total

100 Personnel Services – Salaries

100 Personnel Services – Salaries

9,123.52

Total Personnel Services – Salaries

\$9,123.52

200 Personnel Services – Employee Benefits

210 Group Insurance – Contracted Provider

2,737.78

220 Social Security Contributions

698.02

230 PSERS Retirement Contributions

3,148.58

250 Unemployment Compensation

8.91

260 Workers' Compensation

18.33

Total Personnel Services – Employee Benefits

\$6,611.62

Total 2711 Supervision of Student Transportation Services – Head of Component

\$15,735.14

General Fund (10)

2720 Vehicle Operation Services

Elementary

Secondary

Federal

Total

500 Other Purchased Services

511 Student Transportation Services from Another LEA Within the State

559.34

513 Contracted Carriers

500,004.64

519 Student Transportation Services From Other Sources

174.72

Total Other Purchased Services

\$500,738.70

600 Supplies

610 General Supplies

76.35

650 Supplies & Fees – Technology Related

3,250.00

Total Supplies

\$3,326.35

Total 2720 Vehicle Operation Services

\$504,065.05

General Fund (10)

	<u>Elementary</u>	<u>Secondary</u>	<u>Federal</u>	<u>Total</u>
2750 Nonpublic Transportation				
500 <u>Other Purchased Services</u>				
513 Contracted Carriers				108,755.49
Total Other Purchased Services				\$108,755.49
Total 2750 Nonpublic Transportation				\$108,755.49

General Fund (10)

2800 Support Services – Central

	<u>Elementary</u>	<u>Secondary</u>	<u>Federal</u>	<u>Total</u>
100 Personnel Services – Salaries				
100 Personnel Services – Salaries			16,320.34	121,252.80
Total Personnel Services – Salaries			\$16,320.34	\$121,252.80
200 Personnel Services – Employee Benefits				
210 Group Insurance – Contracted Provider				54,224.04
220 Social Security Contributions			458.64	9,286.68
230 PSERS Retirement Contributions			2,070.64	41,789.24
240 Tuition Reimbursement				5,832.00
250 Unemployment Compensation			0.78	221.00
260 Workers' Compensation				439.68
Total Personnel Services – Employee Benefits			\$2,530.06	\$111,792.64
300 Purchased Professional and Technical Services				
360 Employee Training and Development Services				795.00
Total Purchased Professional and Technical Services				\$795.00
600 Supplies				
650 Supplies & Fees – Technology Related				14,840.68
Total Supplies				\$14,840.68
700 Property				
762 Capitalized Equipment - Replacement			7,039.64	8,848.01
766 Capitalized Technology Equipment – Replacement				95,321.03
Total Property			\$7,039.64	\$104,169.04
Total 2800 Support Services – Central			\$25,890.04	\$352,850.16

General Fund (10)

2830 Staff Services

Elementary

Secondary

Federal

Total

200 Personnel Services – Employee Benefits

240 Tuition Reimbursement

5,832.00

Total Personnel Services – Employee Benefits

\$5,832.00

300 Purchased Professional and Technical Services

360 Employee Training and Development Services

795.00

Total Purchased Professional and Technical Services

\$795.00

Total 2830 Staff Services

\$6,627.00

General Fund (10)

	<u>Elementary</u>	<u>Secondary</u>	<u>Federal</u>	<u>Total</u>
2834 Staff Development Services – Non-Instructional, Certified Staff Only				
200 Personnel Services – Employee Benefits				
240 Tuition Reimbursement				2,232.00
Total Personnel Services – Employee Benefits				\$2,232.00
300 Purchased Professional and Technical Services				
360 Employee Training and Development Services				465.00
Total Purchased Professional and Technical Services				\$465.00
Total 2834 Staff Development Services – Non-Instructional, Certified Staff Only				\$2,697.00

General Fund (10)

	<u>Elementary</u>	<u>Secondary</u>	<u>Federal</u>	<u>Total</u>
2836 Staff Development Services – Non-Instructional, Non-Certified Staff Only				
200 Personnel Services – Employee Benefits				
240 Tuition Reimbursement				3,600.00
Total Personnel Services – Employee Benefits				\$3,600.00
300 Purchased Professional and Technical Services				
360 Employee Training and Development Services				330.00
Total Purchased Professional and Technical Services				\$330.00
Total 2836 Staff Development Services – Non-Instructional, Non-Certified Staff Only				\$3,930.00

General Fund (10)

	<u>Elementary</u>	<u>Secondary</u>	<u>Federal</u>	<u>Total</u>
2840 Data Processing Services				
100 Personnel Services – Salaries				
100 Personnel Services – Salaries			10,320.58	115,253.04
Total Personnel Services – Salaries			\$10,320.58	\$115,253.04
200 Personnel Services – Employee Benefits				
210 Group Insurance – Contracted Provider				54,224.04
220 Social Security Contributions				8,828.04
230 PSERS Retirement Contributions				39,718.60
250 Unemployment Compensation				211.97
260 Workers' Compensation				421.35
Total Personnel Services – Employee Benefits				\$103,404.00
600 Supplies				
650 Supplies & Fees – Technology Related				14,840.68
Total Supplies				\$14,840.68
700 Property				
762 Capitalized Equipment - Replacement			7,039.64	8,848.01
766 Capitalized Technology Equipment – Replacement				95,321.03
Total Property			\$7,039.64	\$104,169.04
Total 2840 Data Processing Services			\$17,360.22	\$337,666.76

General Fund (10)

2850 State and Federal Agency Liaison Services

Elementary

Secondary

Federal

Total

100 Personnel Services – Salaries

100 Personnel Services – Salaries

5,999.76

5,999.76

Total Personnel Services – Salaries

\$5,999.76

\$5,999.76

200 Personnel Services – Employee Benefits

220 Social Security Contributions

458.64

458.64

230 PSERS Retirement Contributions

2,070.64

2,070.64

250 Unemployment Compensation

0.78

9.03

260 Workers' Compensation

18.33

Total Personnel Services – Employee Benefits

\$2,530.06

\$2,556.64

Total 2850 State and Federal Agency Liaison Services

\$8,529.82

\$8,556.40

General Fund (10)

2900 Other Support Services

Elementary

Secondary

Federal

Total

500 Other Purchased Services

595 IU Payments By Withholding

4,527.57

Total Other Purchased Services

\$4,527.57

Total 2900 Other Support Services

\$4,527.57

General Fund (10)

2910 Support Services Not Listed Elsewhere In the 2000 Series

Elementary

Secondary

Federal

Total

500 Other Purchased Services

595 IU Payments By Withholding

4,527.57

Total Other Purchased Services

\$4,527.57

Total 2910 Support Services Not Listed Elsewhere In the 2000 Series

\$4,527.57

General Fund (10)

3000 Operation of Non-Instructional Services	<u>Total</u>
100 Personnel Services – Salaries	
100 Personnel Services – Salaries	83,804.50
Total Personnel Services – Salaries	\$83,804.50
200 Personnel Services – Employee Benefits	
220 Social Security Contributions	6,380.66
230 PSERS Retirement Contributions	26,891.06
250 Unemployment Compensation	134.97
260 Workers’ Compensation	73.31
Total Personnel Services – Employee Benefits	\$33,480.00
300 Purchased Professional and Technical Services	
330 Other Professional Services	57,002.40
Total Purchased Professional and Technical Services	\$57,002.40
400 Purchased Property Services	
430 Repairs and Maintenance Services	8,001.02
Total Purchased Property Services	\$8,001.02
500 Other Purchased Services	
510 Student Transportation Services	22,265.74
520 Insurance – General	5,740.00
580 Travel	3,307.05
Total Other Purchased Services	\$31,312.79
600 Supplies	
610 General Supplies	37,863.82
620 Energy	1,231.39
650 Supplies & Fees – Technology Related	1,266.56
Total Supplies	\$40,361.77
700 Property	
756 Capitalized Technology Equipment – Original	800.00
762 Capitalized Equipment - Replacement	3,149.27
Total Property	\$3,949.27
800 Other Objects	
810 Dues and Fees	2,143.00
860 Grants To Municipal and Community Service Organizations	450.00
Total Other Objects	\$2,593.00
Total 3000 Operation of Non-Instructional Services	\$260,504.75

General Fund (10)

3200 Student Activities

	<u>Elementary</u>	<u>Secondary</u>	<u>Federal</u>	<u>Total</u>
100 Personnel Services – Salaries				
100 Personnel Services – Salaries				79,554.50
Total Personnel Services – Salaries				\$79,554.50
200 Personnel Services – Employee Benefits				
220 Social Security Contributions				6,055.48
230 PSERS Retirement Contributions				26,891.06
250 Unemployment Compensation				119.58
260 Workers' Compensation				54.98
Total Personnel Services – Employee Benefits				\$33,121.10
300 Purchased Professional and Technical Services				
330 Other Professional Services				57,002.40
Total Purchased Professional and Technical Services				\$57,002.40
400 Purchased Property Services				
430 Repairs and Maintenance Services				8,001.02
Total Purchased Property Services				\$8,001.02
500 Other Purchased Services				
510 Student Transportation Services				22,265.74
520 Insurance – General				5,740.00
580 Travel				1,765.68
Total Other Purchased Services				\$29,771.42
600 Supplies				
610 General Supplies			910.00	34,819.98
620 Energy				1,231.39
650 Supplies & Fees – Technology Related				1,266.56
Total Supplies			\$910.00	\$37,317.93
700 Property				
756 Capitalized Technology Equipment – Original				800.00
762 Capitalized Equipment - Replacement				3,149.27
Total Property				\$3,949.27
800 Other Objects				
810 Dues and Fees				2,143.00
Total Other Objects				\$2,143.00
Total 3200 Student Activities			\$910.00	\$250,860.64

General Fund (10)

3300 Community Services

Elementary Secondary Federal Total

100	<u>Personnel Services – Salaries</u>			
	100 Personnel Services – Salaries			4,250.00
Total Personnel Services – Salaries				\$4,250.00
200	<u>Personnel Services – Employee Benefits</u>			
	220 Social Security Contributions			325.18
	250 Unemployment Compensation			15.39
	260 Workers' Compensation			18.33
Total Personnel Services – Employee Benefits				\$358.90
500	<u>Other Purchased Services</u>			
	580 Travel			1,541.37
Total Other Purchased Services				\$1,541.37
600	<u>Supplies</u>			
	610 General Supplies		3,043.84	3,043.84
Total Supplies			\$3,043.84	\$3,043.84
800	<u>Other Objects</u>			
	860 Grants To Municipal and Community Service Organizations			450.00
Total Other Objects				\$450.00
Total 3300 Community Services			\$3,043.84	\$9,644.11

General Fund (10)

5000 Other Expenditures and Financing Uses

Total

800 Other Objects

830 Interest	25,930.26
880 Refunds of Prior Years' Receipts	752.35

Total Other Objects	\$26,682.61
----------------------------	--------------------

900 Other Uses of Funds

910 Redemption of Principal	1,616,397.83
939 Other Fund Transfers	150,740.96

Total Other Uses of Funds	\$1,767,138.79
----------------------------------	-----------------------

Total 5000 Other Expenditures and Financing Uses	\$1,793,821.40
---	-----------------------

General Fund (10)

5100 Debt Service / Other Expenditures and Financing Uses

Elementary

Secondary

Federal

Total

800 Other Objects

830 Interest 25,930.26

880 Refunds of Prior Years' Receipts 752.35

Total Other Objects \$26,682.61

900 Other Uses of Funds

910 Redemption of Principal 1,616,397.83

Total Other Uses of Funds \$1,616,397.83

Total 5100 Debt Service / Other Expenditures and Financing Uses \$1,643,080.44

General Fund (10)

5120 Debt Service – Refunded Bonds

Elementary

Secondary

Federal

Total

800 Other Objects

830 Interest 25,930.26

Total Other Objects

\$25,930.26

900 Other Uses of Funds

910 Redemption of Principal 1,616,397.83

Total Other Uses of Funds

\$1,616,397.83

Total 5120 Debt Service – Refunded Bonds

\$1,642,328.09

General Fund (10)

5130 Refund of Prior Year Revenues / Receipts

Elementary

Secondary

Federal

Total

800 Other Objects

880 Refunds of Prior Years' Receipts

752.35

Total Other Objects

\$752.35

Total 5130 Refund of Prior Year Revenues / Receipts

\$752.35

General Fund (10)

	<u>Elementary</u>	<u>Secondary</u>	<u>Federal</u>	<u>Total</u>
5200 Interfund Transfers – Out				
900 <u>Other Uses of Funds</u>				
939 Other Fund Transfers				150,740.96
Total Other Uses of Funds				\$150,740.96
Total 5200 Interfund Transfers – Out				\$150,740.96

General Fund (10)

5250 Enterprise Fund Transfers

Elementary

Secondary

Federal

Total

900 Other Uses of Funds

939 Other Fund Transfers

150,740.96

Total Other Uses of Funds

\$150,740.96

Total 5250 Enterprise Fund Transfers

\$150,740.96

Other Capital Projects Fund (39)

2000 Support Services

800 Other Objects

810 Dues and Fees

Total

15.00

Total Other Objects

\$15.00

Total 2000 Support Services

\$15.00

LEA : 106169003 Union SD

Printed 12/16/2021 1:35:24 PM

Other Capital Projects Fund (39)

2500 Support Services – Business

Elementary

Secondary

Federal

Total

800 Other Objects

810 Dues and Fees

15.00

Total Other Objects

\$15.00

Total 2500 Support Services – Business

\$15.00

Other Capital Projects Fund (39)

	<u>Elementary</u>	<u>Secondary</u>	<u>Federal</u>	<u>Total</u>
2510 Fiscal Services				
800 <u>Other Objects</u>				
810 Dues and Fees				15.00
Total Other Objects				\$15.00
Total 2510 Fiscal Services				\$15.00

Other Capital Projects Fund (39)

2511 Supervision of Fiscal Services - Head of Component

Elementary

Secondary

Federal

Total

800 Other Objects

810 Dues and Fees

15.00

Total Other Objects

\$15.00

Total 2511 Supervision of Fiscal Services - Head of Component

\$15.00

Other Capital Projects Fund (39)

4000 Facilities Acquisition, Construction and Improvement Services

Total

400 Purchased Property Services

450 Construction Services

1,105,300.00

Total Purchased Property Services

\$1,105,300.00

Total 4000 Facilities Acquisition, Construction and Improvement Services

\$1,105,300.00

Other Capital Projects Fund (39)

4600 Existing Building Improvement Services

Elementary

Secondary

Federal

Total

400 Purchased Property Services

450 Construction Services

1,105,300.00

Total Purchased Property Services

\$1,105,300.00

Total 4600 Existing Building Improvement Services

\$1,105,300.00

	<u>General Fund(10)</u>	<u>Student Sponsored Activity Fund(21)</u>	<u>Public Purpose Trust(27)</u>	<u>Other Compt Approved (28)</u>	<u>Athletic / Activity(29)</u>
1000 Instruction					
1100 Regular Programs - Elementary / Secondary	5,162,062.47				
1200 Special Programs - Elementary / Secondary	1,562,893.54				
1300 Vocational Education	363,746.86				
Total Instruction	\$7,088,702.87				
2000 Support Services					
2100 Support Services - Students	461,905.36				
2200 Support Services - Instructional Staff	182,814.51				
2300 Support Services - Administration	952,331.99				
2400 Support Services - Pupil Health	161,633.35				
2500 Support Services - Business	125,139.39				
2600 Operation and Maintenance of Plant Services	1,270,293.16				
2700 Student Transportation Services	628,555.68				
2800 Support Services - Central	352,850.16				
2900 Other Support Services	4,527.57				
Total Support Services	\$4,140,051.17				
3000 Operation of Non-Instructional Services					
3200 Student Activities	250,860.64				
3300 Community Services	9,644.11				
Total Operation of Non-Instructional Services	\$260,504.75				
4000 Facilities Acquisition, Construction and Improvement Services					
4600 Existing Building Improvement Services					
Total Facilities Acquisition, Construction and Improvement Services					
5000 Other Expenditures and Financing Uses					
5100 Debt Service / Other Expenditures and Financing Uses	1,643,080.44				
5200 Interfund Transfers - Out	150,740.96				
Total Other Expenditures and Financing Uses	\$1,793,821.40				
TOTAL ACTUAL EXPENDITURES & OTHER FINANCING USES	\$13,283,080.19				

	<u>Capital Reserve (690.1850)(31)</u>	<u>Capital Reserve (1431)(32)</u>	<u>Other Capital Projects Fund(39)</u>	<u>Debt Service(40)</u>	<u>Permanent(90)</u>
1000 Instruction					
1100 Regular Programs - Elementary / Secondary					
1200 Special Programs - Elementary / Secondary					
1300 Vocational Education					
Total Instruction					
2000 Support Services					
2100 Support Services - Students					
2200 Support Services - Instructional Staff					
2300 Support Services - Administration					
2400 Support Services - Pupil Health					
2500 Support Services - Business			15.00		
2600 Operation and Maintenance of Plant Services					
2700 Student Transportation Services					
2800 Support Services - Central					
2900 Other Support Services					
Total Support Services			\$15.00		
3000 Operation of Non-Instructional Services					
3200 Student Activities					
3300 Community Services					
Total Operation of Non-Instructional Services					
4000 Facilities Acquisition, Construction and Improvement Services					
4600 Existing Building Improvement Services			1,105,300.00		
Total Facilities Acquisition, Construction and Improvement Services			\$1,105,300.00		
5000 Other Expenditures and Financing Uses					
5100 Debt Service / Other Expenditures and Financing Uses					
5200 Interfund Transfers - Out					
Total Other Expenditures and Financing Uses					
TOTAL ACTUAL EXPENDITURES & OTHER FINANCING USES			\$1,105,315.00		

Total

1000 <u>Instruction</u>	
1100 Regular Programs - Elementary / Secondary	5,162,062.47
1200 Special Programs - Elementary / Secondary	1,562,893.54
1300 Vocational Education	363,746.86
Total Instruction	\$7,088,702.87
2000 <u>Support Services</u>	
2100 Support Services - Students	461,905.36
2200 Support Services - Instructional Staff	182,814.51
2300 Support Services - Administration	952,331.99
2400 Support Services - Pupil Health	161,633.35
2500 Support Services - Business	125,154.39
2600 Operation and Maintenance of Plant Services	1,270,293.16
2700 Student Transportation Services	628,555.68
2800 Support Services - Central	352,850.16
2900 Other Support Services	4,527.57
Total Support Services	\$4,140,066.17
3000 <u>Operation of Non-Instructional Services</u>	
3200 Student Activities	250,860.64
3300 Community Services	9,644.11
Total Operation of Non-Instructional Services	\$260,504.75
4000 <u>Facilities Acquisition, Construction and Improvement Services</u>	
4600 Existing Building Improvement Services	1,105,300.00
Total Facilities Acquisition, Construction and Improvement Services	\$1,105,300.00
5000 <u>Other Expenditures and Financing Uses</u>	
5100 Debt Service / Other Expenditures and Financing Uses	1,643,080.44
5200 Interfund Transfers - Out	150,740.96
Total Other Expenditures and Financing Uses	\$1,793,821.40
TOTAL ACTUAL EXPENDITURES & OTHER FINANCING USES	\$14,388,395.19

PSERS Salary Data (Salary Data should relate to the General Fund only)

Amount Description	Amount
Total Salary Base for salaries subject to PSERS withholding	4,888,737.25
Total Federally Funded salaries subject to PSERS withholding	136,624.12
	<hr/>

Title I Expenditure Data

Amount Description	Amount
Expenditures Funded with Current Title I Funds	190,079.39
Expenditures Funded with Carry over Title I Funds	
Total Title I Expenditure Data	<hr/> \$190,079.39 <hr/>

Title IV Revenue Data

Amount Description	Amount
Revenue from Title IV-A-1: Student Support and Academic Enrichment Grants	13,517.00
Revenue from Title IV-B: 21st Century Community Learning Centers	
	<hr/>

Title V Revenue Data

Amount Description	Amount
Revenue from Title V-B-2: Rural and Low-Income School Programs	
Revenue from Title V-B-1: Small Rural School Achievement (Directly from the Federal Govt)	38,741.52
	<hr/>

1.	<u>Current Special Education Expenditures/Expenses within Functions 1000, 2000, 3100, and 3200</u>	3,514,693.28
2.	<u>Current Special Education Expenditures for Instruction Functions 1000 and 3200</u>	2,349,791.72
3.	<u>Current Special Education Expenditures for Pupil Support Services Function 2100</u>	247,346.66
4.	<u>Current Special Education Expenditures for Instructional Staff Support Services Function 2200</u>	119,049.27
5.	<u>Current Special Education Expenditures for Student Transportation Support Services Function 2700</u>	214,086.48

Note: Do not report total Special Education expenditures for the functions listed above. Refer to the AFR User Manual for specific instructions on Funds/Functions/Objects to be included and excluded on each line.

Benefits for Staff Relative to Collective Bargaining Agreements

	OBJECT	COVERED	NOT COVERED	TOTAL
10 General Fund	No Self Insurance data to report			
	211 Medical Insurance	1,159,665.46	266,234.34	1,425,899.80
	212 Dental Insurance	49,153.88	10,336.84	59,490.72
	215 Eye Care Insurance	10,142.55	3,024.40	13,166.95
	216 Prescription Insurance			
	271 Self-Insurance Medical Benefits			
	272 Self-Insurance Dental Benefits			
	275 Self-Insurance Eye Care Benefits			
	276 Self-Insurance Prescription Benefits			
	FUND TOTAL	\$1,218,961.89	\$279,595.58	\$1,498,557.47
50 Enterprise Fund	No Self Insurance data to report			
	211 Medical Insurance	45,487.30	26,253.12	71,740.42
	212 Dental Insurance	1,322.70	774.84	2,097.54
	215 Eye Care Insurance	496.50	168.60	665.10
	216 Prescription Insurance			
	271 Self-Insurance Medical Benefits			
	272 Self-Insurance Dental Benefits			
	275 Self-Insurance Eye Care Benefits			
	276 Self-Insurance Prescription Benefits			
	FUND TOTAL	\$47,306.50	\$27,196.56	\$74,503.06
60 Internal Service Fund	No Self Insurance data to report			
	211 Medical Insurance			
	212 Dental Insurance			
	215 Eye Care Insurance			
	216 Prescription Insurance			
	271 Self-Insurance Medical Benefits			
	272 Self-Insurance Dental Benefits			
	275 Self-Insurance Eye Care Benefits			
	276 Self-Insurance Prescription Benefits			
	FUND TOTAL			
Total of All Funds		\$1,266,268.39	\$306,792.14	\$1,573,060.53

LEA : 106169003 Union SD

Printed 12/16/2021 1:36:45 PM

Function	Special Education (Prior Year)	Nonspecial Education (Prior Year)	Total (Prior Year)	Special Education (Current Year)	Nonspecial Education (Current Year)	Total (Current Year)
2120 Guidance Services	53,472.18	190,310.45	243,782.63	49,623.09	183,968.54	233,591.63
2140 Psychological Services	124,648.63	6,560.45	131,209.08	61,448.55		61,448.55
2150 Speech Pathology and Audiology Services	88,875.13		88,875.13	80,889.21		80,889.21
2160 Social Work Services						
2260 Instruction and Curriculum Development Services				103,679.06		103,679.06
2350 Legal and Accounting Services	2,784.74	9,873.19	12,657.93	3,402.08	12,061.92	15,464.00
2420 Medical Services						
2440 Nursing Services	33,684.55	119,885.16	153,569.71	34,336.62	127,296.73	161,633.35
2700 Student Transportation Services	95,231.35	499,467.20	594,698.55	120,480.37	508,075.31	628,555.68
Total	\$398,696.58	\$826,096.45	\$1,224,793.03	\$453,858.98	\$831,402.50	\$1,285,261.48

(PRINCIPAL AMOUNTS ONLY)

GOVERNMENTAL FUNDS/ ACTIVITIES

	Short-Term Borrowing	General Obligation Bonds/Notes	Authority Building Obligations	Other Long-Term Debt	Other Post-Employment Benefits (OPEB)	Compensated Absences	Net Pension Liability	Total
1. Debt at Beginning of Fiscal Year		1,568,880.00			4,433,583.00	71,575.00	16,655,000.00	22,729,038.00
2. Additional Debt Incurred During Year		2,545,180.00			595,404.00		923,000.00	4,063,584.00
3. Retirements and Repayments		1,568,880.00				1,400.00		1,570,280.00
4. Debt at End of Fiscal Year		2,545,180.00			5,028,987.00	70,175.00	17,578,000.00	25,222,342.00
5. Accreted Interest at End Of Fiscal Year								
6. Total Debt and Accreted Interest		2,545,180.00			5,028,987.00	70,175.00	17,578,000.00	25,222,342.00
7. Current Portion P&I - Due within 1 year		341,183.46						341,183.46
8. Interest Paid during current fiscal year		25,930.26						25,930.26

(PRINCIPAL AMOUNTS ONLY)

PROPRIETARY FUNDS

- 1. Debt at Beginning of Fiscal Year
- 2. Additional Debt Incurred During Year
- 3. Retirements and Repayments
- 4. Debt at End of Fiscal Year
- 5. Accreted Interest at End Of Fiscal Year
- 6. Total Debt and Accreted Interest
- 7. Current Portion P&I - Due within 1 year
- 8. Interest Paid during current fiscal year

Total Principal and Interest Payments Made by Your School - All Funds

Function	Fund		Principal (910)	Principal (920)	Interest (830)	Total (Principal +Interest)	Misc Other Uses (990)
5110	10	General Fund					
5110	20	Special Revenue Funds					
5110	30	Capital Projects Funds					
5110	40	Debt Service Fund					
5110	90	Permanent Fund					
5120	10	General Fund	1,616,397.83		25,930.26	1,642,328.09	
5120	20	Special Revenue Funds					
5120	30	Capital Projects Funds					
5120	40	Debt Service Fund					

Total Debt Payments - Governmental Funds			\$1,616,397.83		\$25,930.26	\$1,642,328.09	
---	--	--	-----------------------	--	--------------------	-----------------------	--

Function	Fund		Principal (910)	Principal (920)	Interest (830)	Total (Principal +Interest)
5110	50	Enterprise Fund				
5110	60	Internal Service Fund				
5120	50	Enterprise Fund				
5120	60	Internal Service Fund				

Total Debt Payments - Proprietary Funds						
--	--	--	--	--	--	--

Debt Details
Governmental Funds/ Activities

Debt Category	Debt Issue Date (MM/YYYY)	Principal Amounts Only				Current Portion Due Within One Year (Principal and Interest)	Interest Paid During Fiscal Year
		Debt at Beginning of Fiscal Year	Additions	Reductions / Repayments	Debt at End of Fiscal Year		
General Obligation Bonds/Notes – CIB	03/2021		1,259,180.00		1,259,180.00	326,453.04	
General Obligation Bonds/Notes – CIB	03/2021		1,286,000.00		1,286,000.00	14,730.42	
General Obligation Bonds/Notes – CIB	06/2016	1,568,880.00		1,568,880.00			25,930.26
Compensated Absences		71,575.00		1,400.00	70,175.00		
Other Post-Employment Benefits (OPEB)		4,433,583.00	595,404.00		5,028,987.00		
Net Pension Liability		16,655,000.00	923,000.00		17,578,000.00		
Totals for Debt Entered:		\$22,729,038.00	\$4,063,584.00	\$1,570,280.00	\$25,222,342.00	\$341,183.46	\$25,930.26

General Fund (10)

Section 1: Tuition/Purchased Services as Reported within Expenditure Detail

	Amount
Tuition Reported in General Fund Expenditures 1000-560	1,029,837.00
Purchased Services in General Fund Expenditures 1000-594 and 1000-597	
Section 1 Total	\$1,029,837.00

Section 2: Tuition Paid to Institution Types During Fiscal Year

	Tuition Paid For Nonspecial Education	Tuition Paid For Special Education	Total
1 1306 Institutions			
2 Institutionalized Children's Programs			
3 Juveniles Incarcerated in Adult Facilities			
4 Residential Treatment Facilities			
5 Other Local Education Agencies	41,700.56	9,574.99	51,275.55
6 Brick and Mortar Charter Schools			
7 Cyber Charter Schools	287,637.06	187,640.00	475,277.06
8 Career and Technology Centers	290,935.99		290,935.99
9 Approved Private Schools			
10 PA Chartered Schools for the Deaf and Blind			
11 Private Residential Rehabilitative Institutions	39,185.77	1,342.25	40,528.02
12 Juvenile Detention Centers			
13 Special Program Jointures			
14 Other Tuition Not Included Elsewhere In This Section		171,820.38	171,820.38
Section 2 Total	\$659,459.38	\$370,377.62	\$1,029,837.00

1 .	<u>Student Transportation Services for Educational Field Trips</u>	216.66
2 .	<u>Student Transportation Services for Student Activities</u>	239.12
3 .	<u>Rental of Vehicles for Student Transportation Services</u>	
4 .	<u>Capital Reserve Funds</u>	

Include only district-owned transportation expenditures paid from State or local money.
 DO NOT include federal expenditures or payments to contract service providers.
 Contracted transportation services should not be recorded on this schedule.

LEA : 106169003 Union SD

Printed 12/16/2021 1:37:13 PM

Food Service / Cafeteria Operations Fund (51)

3000 Operation of Non-Instructional Services

Total

100 Personnel Services – Salaries

100 Personnel Services – Salaries 197,657.71

Total Personnel Services – Salaries \$197,657.71

200 Personnel Services – Employee Benefits

210 Group Insurance – Contracted Provider 98,011.57

220 Social Security Contributions 3,915.41

230 PSERS Retirement Contributions 17,120.39

250 Unemployment Compensation 80.97

260 Workers' Compensation 74.48

Total Personnel Services – Employee Benefits \$119,202.82

400 Purchased Property Services

430 Repairs and Maintenance Services 5,124.49

Total Purchased Property Services \$5,124.49

500 Other Purchased Services

580 Travel 606.53

Total Other Purchased Services \$606.53

600 Supplies

610 General Supplies 12,108.37

630 Food 127,403.51

640 Books and Periodicals 2,442.50

Total Supplies \$141,954.38

700 Property

740 Depreciation 5,110.00

Total Property \$5,110.00

800 Other Objects

810 Dues and Fees 557.50

Total Other Objects \$557.50

Total 3000 Operation of Non-Instructional Services \$470,213.43

Food Service / Cafeteria Operations Fund (51)

	<u>Elementary</u>	<u>Secondary</u>	<u>Federal</u>	<u>Total</u>
3100 Food Services				
100 Personnel Services – Salaries				
100 Personnel Services – Salaries			148,218.52	197,657.71
Total Personnel Services – Salaries			\$148,218.52	\$197,657.71
200 Personnel Services – Employee Benefits				
210 Group Insurance – Contracted Provider			73,496.40	98,011.57
220 Social Security Contributions			2,936.07	3,915.41
230 PSERS Retirement Contributions			12,838.15	17,120.39
250 Unemployment Compensation			60.72	80.97
260 Workers' Compensation			55.85	74.48
Total Personnel Services – Employee Benefits			\$89,387.19	\$119,202.82
400 Purchased Property Services				
430 Repairs and Maintenance Services			3,842.72	5,124.49
Total Purchased Property Services			\$3,842.72	\$5,124.49
500 Other Purchased Services				
580 Travel			454.82	606.53
Total Other Purchased Services			\$454.82	\$606.53
600 Supplies				
610 General Supplies			9,079.76	12,108.37
630 Food			91,057.23	127,403.51
640 Books and Periodicals			1,831.57	2,442.50
Total Supplies			\$101,968.56	\$141,954.38
700 Property				
740 Depreciation				5,110.00
Total Property				\$5,110.00
800 Other Objects				
810 Dues and Fees			418.06	557.50
Total Other Objects			\$418.06	\$557.50
Total 3100 Food Services			\$344,289.87	\$470,213.43

	<u>Food Service(51)</u>	<u>Child Care Operations(52)</u>	<u>Other Enterprise(58)</u>	<u>Internal Service(60)</u>	<u>Total</u>
3000 <u>Operation of Non-Instructional Services</u>					
3100 Food Services	470,213.43				470,213.43
Total Operation of Non-Instructional Services	\$470,213.43				\$470,213.43
TOTAL ACTUAL EXPENDITURES & OTHER FINANCING USES	\$470,213.43				\$470,213.43

LEA : 106169003 Union SD

Printed 12/16/2021 1:37:41 PM

Fund	School	School Number	Local Personnel	Local Nonpersonnel	State Personnel	State Nonpersonnel	Federal Personnel	Federal Nonpersonnel	Total	Explanation
10										
	Sligo El Sch	8473	367,266.43	379,102.63	1,396,356.95	1,441,358.52	147,888.51	82,296.35	3,814,269.39	
	Union HS	1501	371,131.86	464,629.51	1,411,053.45	1,766,534.05	179,537.81	99,908.42	4,292,795.10	
Total			738,398.29	843,732.14	2,807,410.40	3,207,892.57	327,426.32	182,204.77	8,107,064.49	